

# CAPITAL IMPROVEMENT PROGRAM FISCAL YEAR 2023/24



**REPRESENTATIVE  
DARRELL ISSA  
(CA-48)**

Delivering value to our diverse customers and the communities we serve by providing safe, reliable, economical and environmentally sustainable water, wastewater and recycled water services.



THIS PAGE INTENTIONALLY LEFT BLANK

**TABLE OF CONTENTS**

Purpose of Report ..... 5

Capital Improvement Program Summary ..... 6

EMWD Board Member Divisions ..... 7

EMWD Congressional Districts ..... 8

Congressional District 48

    WATER Service Projects

        Los Alamos Hills Water Facilities ..... 9

    WASTEWATER Service Projects

        Calle Medusa Sewer and Access Road Emergency Repair ..... 10

        Calle Medusa Sewer Line Erosion Protection ..... 11

        Calle Pina Colada Lift Station Rehabilitation ..... 12

        Diaz Sewer Modification ..... 13

        Front Street Lift Station Rehabilitation ..... 14

        General Kearny Sewer Cured-in-Place Pipe Lining ..... 15

        Golden Triangle Sewer Infrastructure ..... 16

        Northern Wine Country Sewer ..... 17

        Southern Wine Country Sewer ..... 18

        Temecula Valley Regional Water Reclamation Facility and Perris  
Valley Regional Water Reclamation Facility Side Stream Treatment ..... 19

        Temecula Valley Regional Water Reclamation Facility Dewatering  
Building Corrosion Mitigation ..... 20

        Temecula Valley Regional Water Reclamation Facility Erosion Control ... 21

        Temecula Valley Regional Water Reclamation Facility Gravity Sand  
Filter Rehabilitation ..... 22

        Temecula Valley Regional Water Reclamation Facility Plant 1  
Air Line Replacement ..... 23

**TABLE OF CONTENTS (CONT.)**

Temecula Valley Regional Water Reclamation Facility Plant 3  
 Electrical Modifications .....24

Temecula Valley Regional Water Reclamation Facility TEPS  
 VFD Installation.....25

Warm Springs Lift Station Replacement .....26

RECYCLED Service Projects  
 Recycled Water Facilities Master Plan Update .....27

Regional Districts

WASTEWATER Service Projects  
 MVRWRF - PVRWRF Engine Room Ventilation Monitoring .....28

Regional Water Reclamation Facilities Aeration Basins Rehabilitation  
 and Diffuser Replacement .....29

Regional Water Reclamation Facilities Biosolids Master Plan.....30

Regional Water Reclamation Facility Digester Gas  
 Utilization Solicitation .....31

RWRF Hydrogen Sulfide Mitigation Study .....32

Regional Water Reclamation Facilities Rehabilitation Planning Study ....33

Wastewater Collection System Condition Assessment .....34

GENERAL Service Projects  
 Communication Towers Install .....35



## PURPOSE OF REPORT

Eastern Municipal Water District (EMWD) is future focused. We plan for and construct state-of-the-art facilities and infrastructure to meet the dynamic and growing water treatment and delivery, wastewater collection and treatment, and recycled water delivery needs of EMWD's 558 square mile service area. This extensive and robust infrastructure is developed with well-managed and cost-effective solutions at the forefront throughout the planning, design, and construction process.



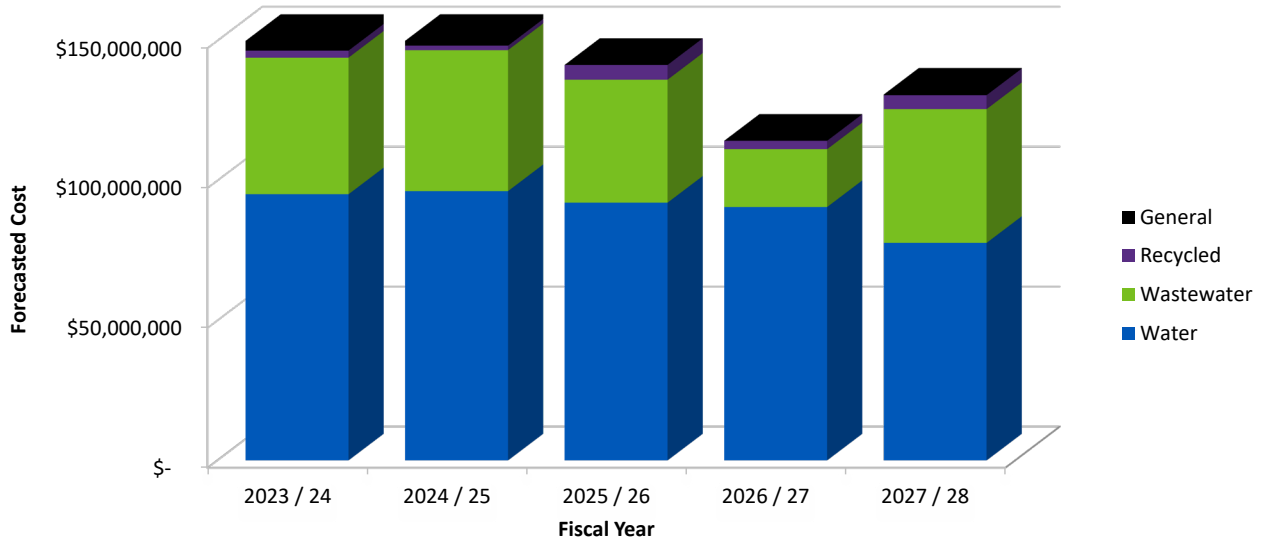
EMWD's Capital Improvement Program (CIP) is a 5-year snapshot of our long-term Capital Improvement Plan document, which contains all of the water treatment and delivery, wastewater collection and treatment, and recycled water distribution system capital improvements that are needed to support the buildout of existing jurisdictional General Plans throughout our service area. The CIP relies on the Capital Improvement Plan document and Facility Master Plans for our water, wastewater, and recycled water systems to identify the improvements needed, establish when they will be needed, and provide updated estimates of their costs. The funding needed to support EMWD's short and long-term expansion of the systems is summarized in the CIP.

The CIP also schedules the necessary construction by project year and aligns the financing necessary to meet this schedule. The projects in the CIP are tracked during the current year and the entire five-year program is reviewed and revised on an annual basis. During the annual review, projects are added, deferred or deleted based on current growth projections and any newly identified requirements are prioritized into the respective future years. This report provides an overview of current active projects.

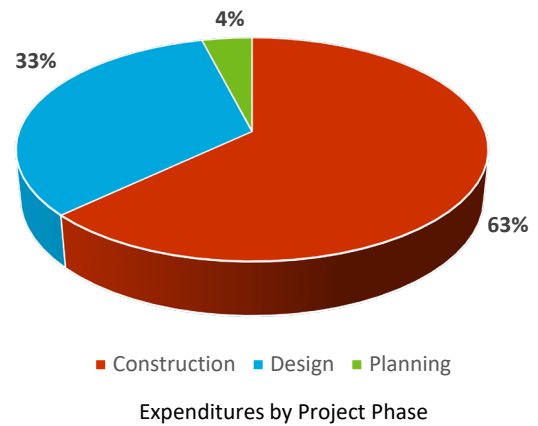
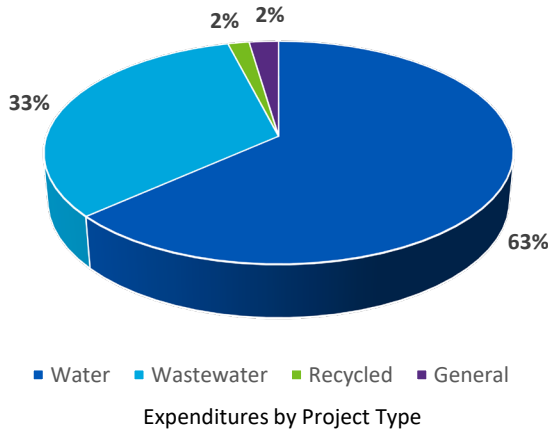
### CAPITAL IMPROVEMENT PROGRAM SUMMARY

#### FISCAL YEARS 2023-28 OVERVIEW

- Total budget of \$686M with external funding of \$115M
- Water system investments average \$90.4M/year over the five-year period



#### FISCAL YEAR 2023-24 OVERVIEW

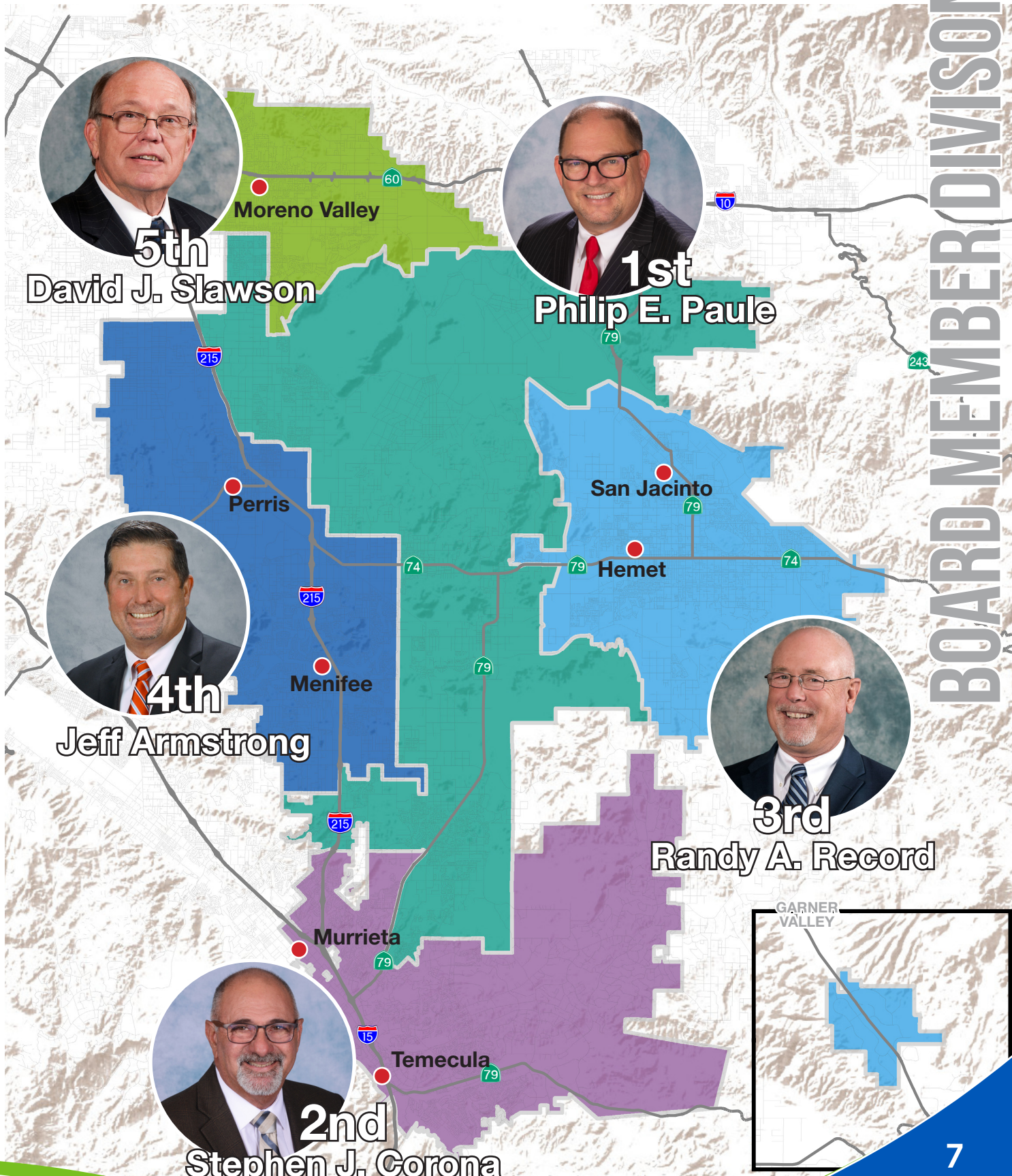


PROJECT TYPE	COUNT	2023 – 24 (\$ Million)
WATER	93	\$95.2 Mil
WASTEWATER	52	\$48.8 Mil
RECYCLED	8	\$2.5 Mil
GENERAL	8	\$3.5 Mil
TOTAL	161	\$150.0 Mil



**BOARD MEMBER DIVISIONS**

**BOARD MEMBER DIVISIONS**



**5th**  
David J. Slawson



**1st**  
Philip E. Paule



**4th**  
Jeff Armstrong



**3rd**  
Randy A. Record

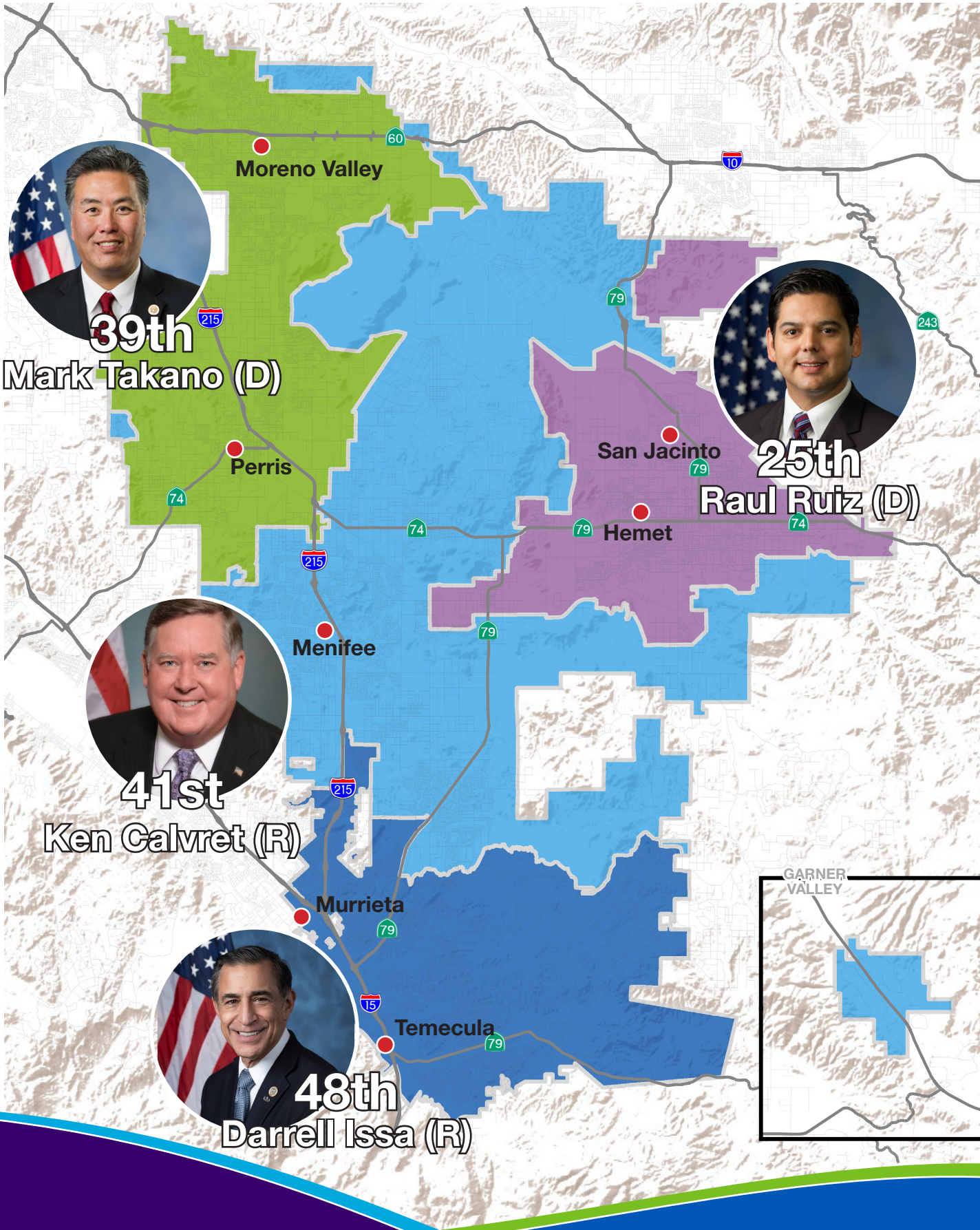


**2nd**  
Stephen J. Corona



CONGRESSIONAL DISTRICTS

CONGRESSIONAL DISTRICTS



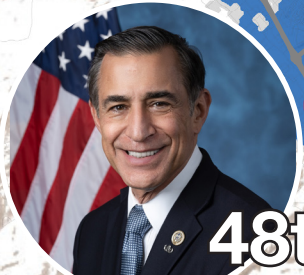
**39th**  
Mark Takano (D)



**25th**  
Raul Ruiz (D)



**41st**  
Ken Calvret (R)



**48th**  
Darrell Issa (R)



# Los Alamos Hills Water Facilities

## PROJECT SUMMARY

In the northeast of Murrieta, there is an area in the Los Alamos Hills community that currently lacks water district service and is not part of either the Metropolitan Water District or Eastern Municipal Water District. As a result, residents in this area depend on private wells for their water supply. To address this situation and plan for the area's future integration into the District's water system, this project proposes a water distribution pipeline network in this area. The pipelines to be installed are located along segments of Los Alamos Road, Ruth Ellen Way, Mason Avenue, Mary Place, and Celia Road.

**CURRENT STATUS:** Bid / Construction

## ESTIMATED CONSTRUCTION SCHEDULE

- Start: Winter 2023/2024
- Finish: Fall 2024

## PROJECT BUDGET

- Estimated Total Project Budget: \$4,242,000
- Estimated Construction Budget: \$3,700,000
- Estimated Grant Percentage: 77%

## PROJECT BENEFIT

EMWD's water conveyance system is designed to provide reliability and redundancy to deliver high-quality water to homes and businesses with minimal interruptions and to promote public safety through the delivery of sufficient pressure and availability to support fire suppression services.

## PROJECT LOCATION



## MORE INFORMATION

- CONTACT: Roxanne Rountree  
Public Affairs Manager
- PHONE: 951-928-3777 ext. 4391
- EMAIL: rountrr@emwd.org
- EMWD BOARD MEMBER:  
Director Stephen J. Corona  
Division No. 2

# Calle Medusa Sewer and Access Road Emergency Repair

## PROJECT SUMMARY

This project is an emergency repair to the existing sewer maintenance access road and protection of the 10-inch gravity sewer installed in 1991, serving approximately 700 homes in the Solana Vista, Tierra Vista, and Saddlewood Homeowner's Associations (HOAs). The sewer alignment originates at Calle Medusa within the HOAs and crosses undeveloped land adjacent to an unnamed creek before discharging into a sewer within Nicolas Road, all within the City of Temecula. The storms have caused aggressive erosion and migration of the creek, impacting the sewer access road and preventing maintenance access to the sewer at one location, and imposed an imminent threat of exposure and potential damage to the existing sewer routed along the access road. Project Location: District easement close to Calle Medusa Road and adjacent to an unnamed creek in the City of Temecula.

## CURRENT STATUS:

Design

## ESTIMATED CONSTRUCTION SCHEDULE

- Start: Spring 2024
- Finish: Spring 2024

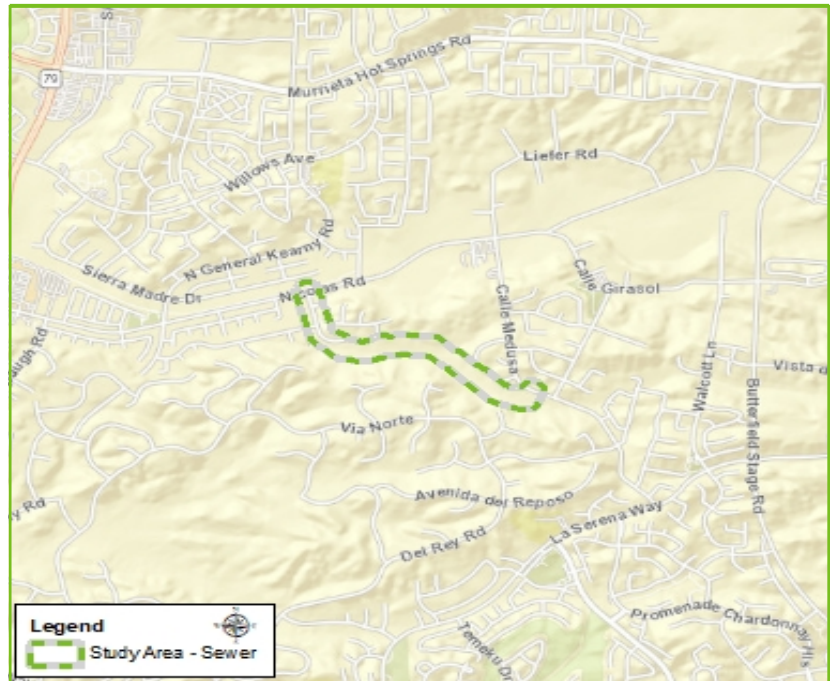
## PROJECT BUDGET

- Estimated Total Project Budget: \$710,000
- Estimated Construction Budget: \$500,000
- Estimated Grant Percentage: N/A

## PROJECT BENEFIT

EMWD strives to protect public health through the safe and reliable transmission of wastewater from homes and business to its regional water reclamation facilities.

## PROJECT LOCATION



## MORE INFORMATION

- CONTACT: Roxanne Rountree  
Public Affairs Manager
- PHONE: 951-928-3777 ext. 4391
- EMAIL: rountrr@emwd.org
- EMWD BOARD MEMBER:  
Director Stephen J. Corona  
Division No. 2

# Calle Medusa Sewer Line Erosion Protection

## PROJECT SUMMARY

The existing 10-inch gravity sewer line located in the Lennar and Meadow View property southwest of Calle Medusa in the Temecula area is susceptible to ongoing erosion caused by an unnamed, nearby creek. The project is evaluating two long-term solutions to the ongoing erosion. The first alternative is the construction of a new lift station which will allow the District to discontinue use of the gravity sewer near the creek. The second alternative is a coordinated multi-agency/entity effort to address the creek in order to protect in place District assets along with those of Southern California Edison, Metropolitan Water District, Southern California Gas Company, and neighboring private properties.

## CURRENT STATUS:

Design

## ESTIMATED CONSTRUCTION SCHEDULE

- Start: Spring 2028
- Finish: Summer 2029

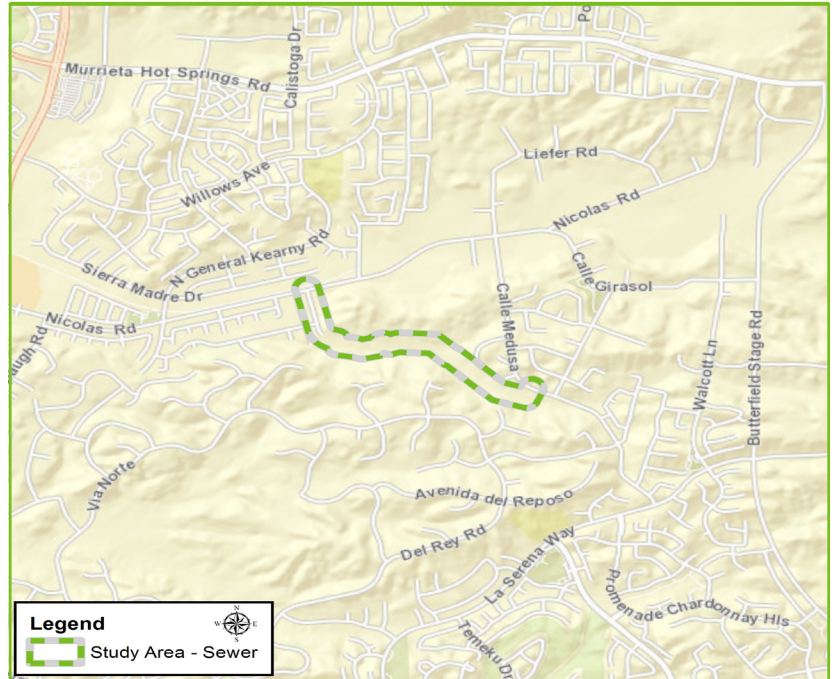
## PROJECT BUDGET

- Estimated Total Project Budget: \$8,217,000
- Estimated Construction Budget: \$6,601,000
- Estimated Grant Percentage: N/A

## PROJECT BENEFIT

EMWD strives to protect public health through the safe and reliable transmission of wastewater from homes and business to its regional water reclamation facilities.

## PROJECT LOCATION



## MORE INFORMATION

- CONTACT: Roxanne Rountree  
Public Affairs Manager
- PHONE: 951-928-3777 ext. 4391
- EMAIL: rountrr@emwd.org
- EMWD BOARD MEMBER:  
Director Stephen J. Corona  
Division No. 2



# Calle Pina Colada Lift Station Rehabilitation

## PROJECT SUMMARY

The existing discharge piping is nearing the end of its useful life and requires replacement. The proposed project will remove and replace the discharge piping with stainless steel material and in addition the support brackets will meet the current seismic standards. The improvements also include repairing and recoating, replacement of the guide rail system and pump base, replacement of the valve assembly, and a flow meter. Project Location: 30571 Del Rey Road, Temecula, CA 92591.

**CURRENT STATUS:** Design

## ESTIMATED CONSTRUCTION SCHEDULE

- Start: Fall 2024
- Finish: Summer 2025

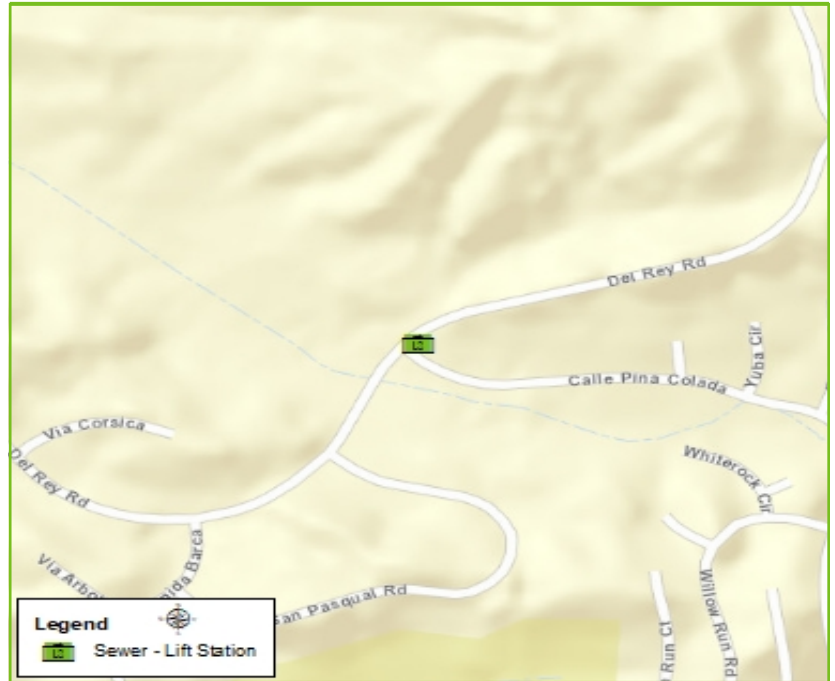
## PROJECT BUDGET

- Estimated Total Project Budget: \$1,000,000
- Estimated Construction Budget: \$750,000
- Estimated Grant Percentage: N/A

## PROJECT BENEFIT

EMWD strives to protect public health through the safe and reliable transmission of wastewater from homes and business to its regional water reclamation facilities.

## PROJECT LOCATION



## MORE INFORMATION

- CONTACT: Roxanne Rountree  
Public Affairs Manager
- PHONE: 951-928-3777 ext. 4391
- EMAIL: rountrr@emwd.org
- EMWD BOARD MEMBER:  
Director Stephen J. Corona  
Division No. 2



# Diaz Sewer Modification

## PROJECT SUMMARY

This project will upsize approximately 1,500 linear feet of 8-inch to 15-inch gravity sewer along Diaz Road from north of Rancho Way to Diaz Lift Station within the City of Temecula. Project must address utility interference, including existing storm drain crossing Diaz Road.

**CURRENT STATUS:** Bid / Construction

## ESTIMATED CONSTRUCTION SCHEDULE

- Start: Summer 2023
- Finish: Summer 2024

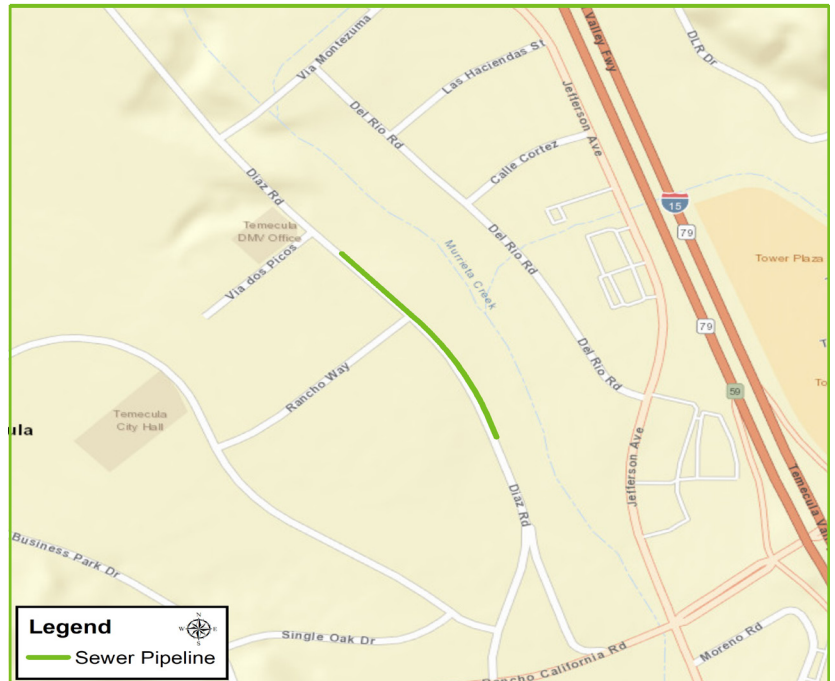
## PROJECT BUDGET

- Estimated Total Project Budget: \$7,116,000
- Estimated Construction Budget: \$6,424,000
- Estimated Grant Percentage: N/A

## PROJECT BENEFIT

EMWD strives to protect public health through the safe and reliable transmission of wastewater from homes and business to its regional water reclamation facilities.

## PROJECT LOCATION



## MORE INFORMATION

- CONTACT: Roxanne Rountree  
Public Affairs Manager
- PHONE: 951-928-3777 ext. 4391
- EMAIL: rountrr@emwd.org
- EMWD BOARD MEMBER:  
Director Stephen J. Corona  
Division No. 2

# Front Street Lift Station Rehabilitation

## PROJECT SUMMARY

Upon recent inspection, it was determined that the wetwell piping and coating system has deteriorated and is approaching the end of its useful life. This project will replace the discharge pipes with stainless steel materials and install new corrosion resistant guide rails. To accommodate the project work, the wetwell must be bypassed during construction. Project Location: 44980 Old Town Front Street, Temecula, CA.

**CURRENT STATUS:** Design

## ESTIMATED CONSTRUCTION SCHEDULE

- Start: Winter 2023/2024
- Finish: Winter 2024/2025

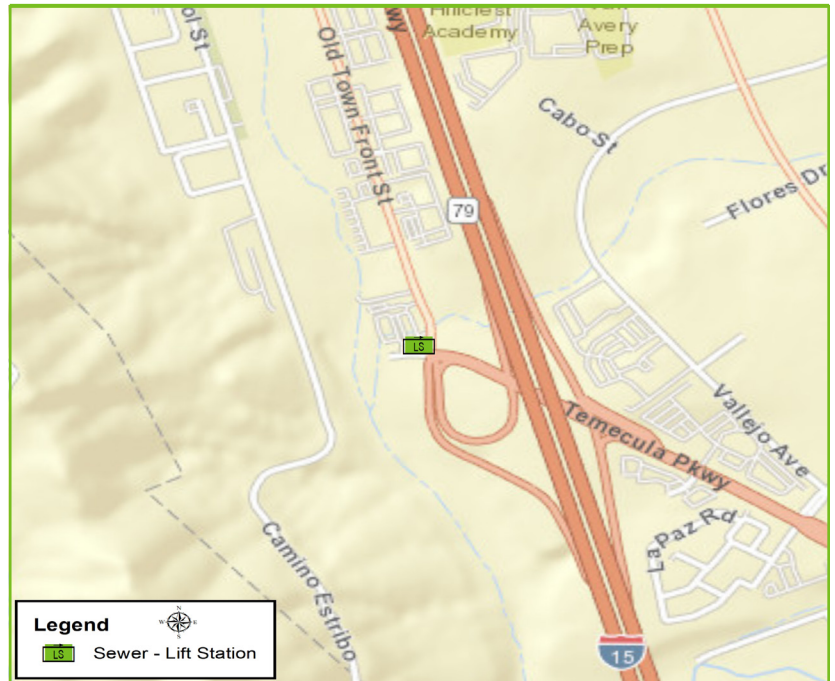
## PROJECT BUDGET

- Estimated Total Project Budget: \$986,000
- Estimated Construction Budget: \$727,000
- Estimated Grant Percentage: N/A

## PROJECT BENEFIT

EMWD strives to protect public health through the safe and reliable transmission of wastewater from homes and business to its regional water reclamation facilities.

## PROJECT LOCATION



## MORE INFORMATION

- CONTACT: Roxanne Rountree  
Public Affairs Manager
- PHONE: 951-928-3777 ext. 4391
- EMAIL: rountrr@emwd.org
- EMWD BOARD MEMBER:  
Director Stephen J. Corona  
Division No. 2

# General Kearny Sewer Cured-in-Place Pipe Lining

## PROJECT SUMMARY

The project will design and install 220 linear feet of cured-in-place lining to the existing 8-inch sewer, sewer cleaning, CCTV inspections, setup, and operate temporary sewer bypass. Project Location: N. General Kearny Drive bridge crossing the Santa Gertrudis Creek, near the intersection of Nicolas Road in Temecula.

## CURRENT STATUS:

**Bid / Construction**

## ESTIMATED CONSTRUCTION SCHEDULE

- Start: Spring 2023
- Finish: Fall 2023

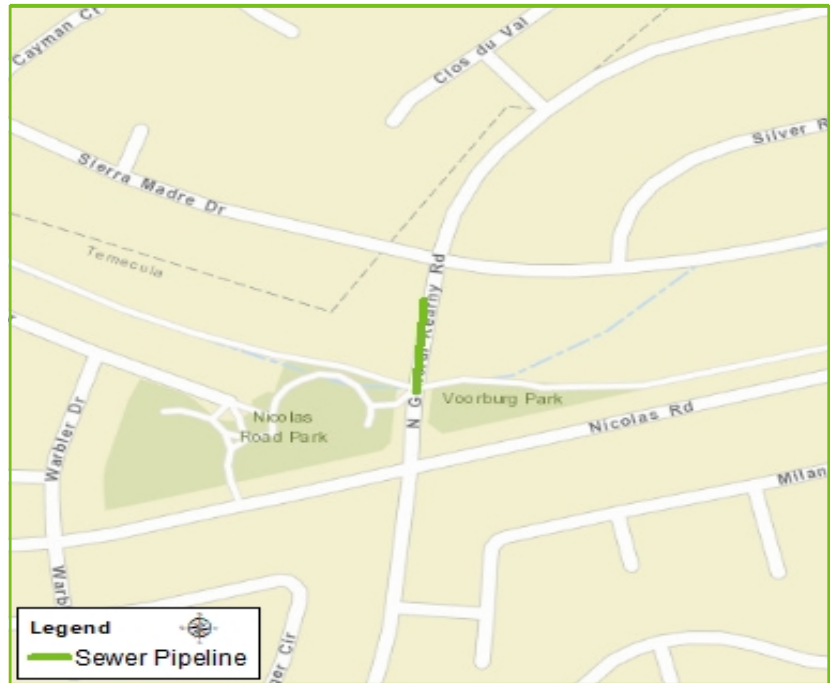
## PROJECT BUDGET

- Estimated Total Project Budget: \$72,000
- Estimated Construction Budget: \$71,000
- Estimated Grant Percentage: N/A

## PROJECT BENEFIT

EMWD strives to protect public health through the safe and reliable transmission of wastewater from homes and business to its regional water reclamation facilities.

## PROJECT LOCATION



## MORE INFORMATION

- CONTACT: Roxanne Rountree  
Public Affairs Manager
- PHONE: 951-928-3777 ext. 4391
- EMAIL: rountrr@emwd.org
- EMWD BOARD MEMBER:  
Director Stephen J. Corona  
Division No. 2

# Golden Triangle Sewer Infrastructure

## PROJECT SUMMARY

The project includes a 15-inch diameter sewer that can serve ultimate upstream demands as well as the Golden Triangle development with a crossing of Murrieta Hot Springs Road and a jack and bore sewer pipeline across the I-15 freeway to existing sewer in Guava Street.

## CURRENT STATUS:

Design

## ESTIMATED CONSTRUCTION SCHEDULE

- Start: Spring 2024
- Finish: Spring 2025

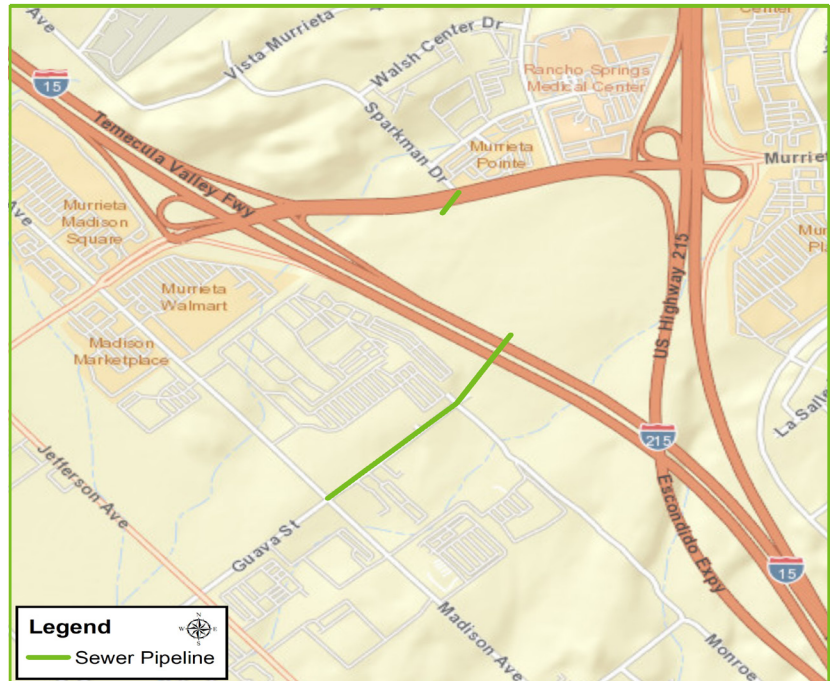
## PROJECT BUDGET

- Estimated Total Project Budget: \$3,574,000
- Estimated Construction Budget: \$2,747,000
- Estimated Grant Percentage: N/A

## PROJECT BENEFIT

EMWD strives to protect public health through the safe and reliable transmission of wastewater from homes and business to its regional water reclamation facilities.

## PROJECT LOCATION



## MORE INFORMATION

- CONTACT: Roxanne Rountree  
Public Affairs Manager
- PHONE: 951-928-3777 ext. 4391
- EMAIL: rountrr@emwd.org
- EMWD BOARD MEMBER:  
Director Stephen J. Corona  
Division No. 2



# Northern Wine Country Sewer

## PROJECT SUMMARY

The project will consist of 4,300 feet of 12-inch sanitary sewer main and 9,700 feet of 8-inch sanitary sewer main as well as the installation of laterals to property lines along Rancho California Road, Glen Oaks Road, Warren Road, and East Benton Road in the Temecula Wine Country.

## CURRENT STATUS:

Design

## ESTIMATED CONSTRUCTION SCHEDULE

- Start: Summer 2024
- Finish: Winter 2025/2026

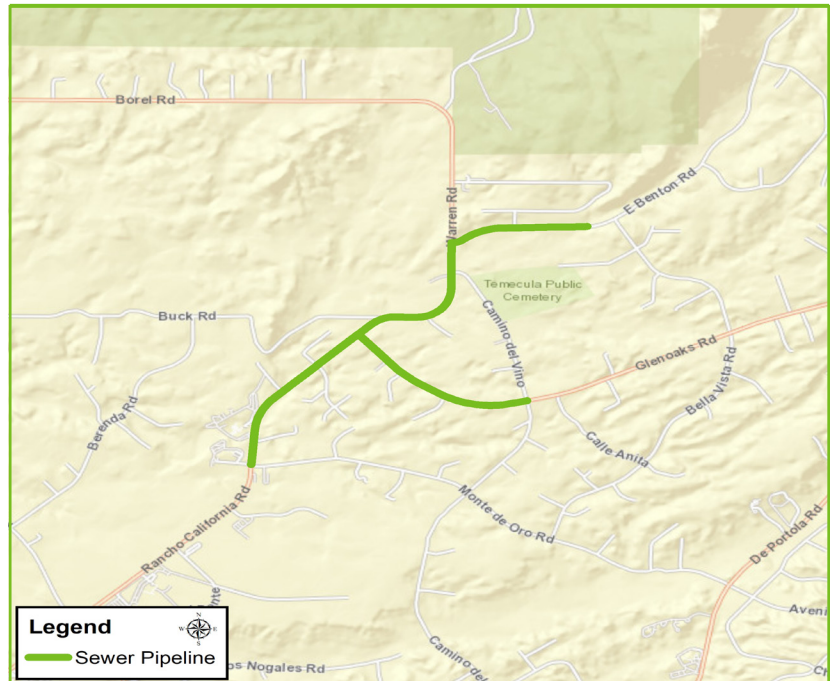
## PROJECT BUDGET

- Estimated Total Project Budget: \$12,096,000
- Estimated Construction Budget: \$11,102,000
- Estimated Grant Percentage: 42%

## PROJECT BENEFIT

EMWD strives to protect public health through the safe and reliable transmission of wastewater from homes and business to its regional water reclamation facilities.

## PROJECT LOCATION



## MORE INFORMATION

- CONTACT: Roxanne Rountree  
Public Affairs Manager
- PHONE: 951-928-3777 ext. 4391
- EMAIL: rountrer@emwd.org
- EMWD BOARD MEMBER:  
Director Stephen J. Corona  
Division No. 2

# Southern Wine Country Sewer

## PROJECT SUMMARY

This project will consist of 9,900 feet of 15-inch gravity sanitary sewer main, 10,300 feet of 12-inch gravity sanitary sewer main, and 3,000 feet of 10-inch gravity sanitary sewer main, as well as installation of laterals to property lines along De Portola Road in the southern portion of the Temecula Wine Country.

## CURRENT STATUS:

Design

## ESTIMATED CONSTRUCTION SCHEDULE

- Start: Summer 2024
- Finish: Winter 2025/2026

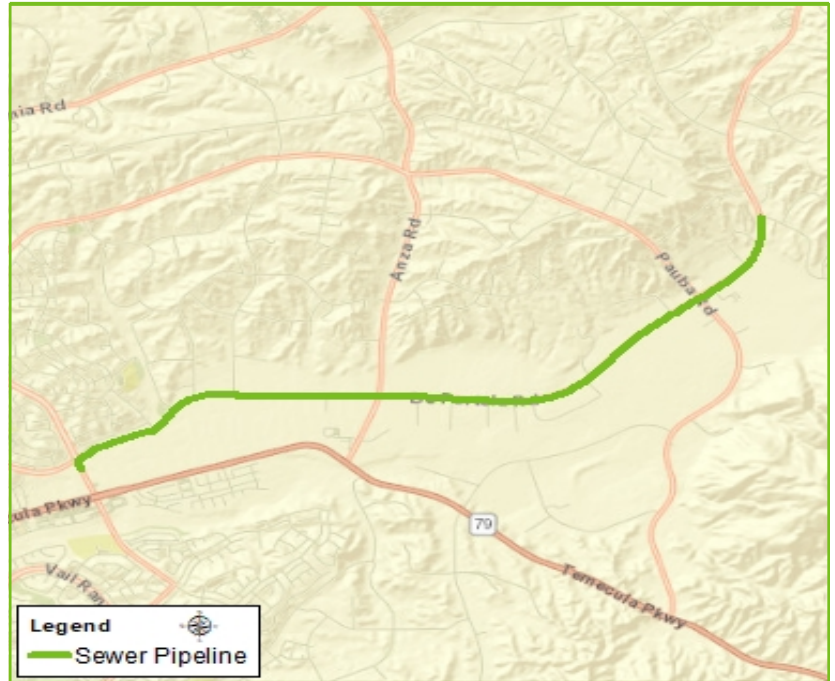
## PROJECT BUDGET

- Estimated Total Project Budget: \$20,132,000
- Estimated Construction Budget: \$18,449,000
- Estimated Grant Percentage: 31%

## PROJECT BENEFIT

EMWD strives to protect public health through the safe and reliable transmission of wastewater from homes and business to its regional water reclamation facilities.

## PROJECT LOCATION



## MORE INFORMATION

- CONTACT: Roxanne Rountree  
Public Affairs Manager
- PHONE: 951-928-3777 ext. 4391
- EMAIL: rountrer@emwd.org
- EMWD BOARD MEMBER:  
Director Stephen J. Corona  
Division No. 2

# Temecula Valley Regional Water Reclamation Facility and Perris Valley Regional Water Reclamation Facility Side Stream Treatment

## PROJECT SUMMARY

The proposed project is to design and implement a sidestream treatment system at Temecula Valley Regional Water Reclamation Facility and Perris Valley Regional Water Reclamation Facility. It will defer major expansions by addressing nitrogen reduction through the implementation of sidestream treatment. Project Location: 42565 Avenida Alvarado, Temecula, CA 92590 and 1301 Case Road, Perris, CA 92570.

## CURRENT STATUS:

Design

## ESTIMATED CONSTRUCTION SCHEDULE

- Start: Summer 2024
- Finish: Fall 2025

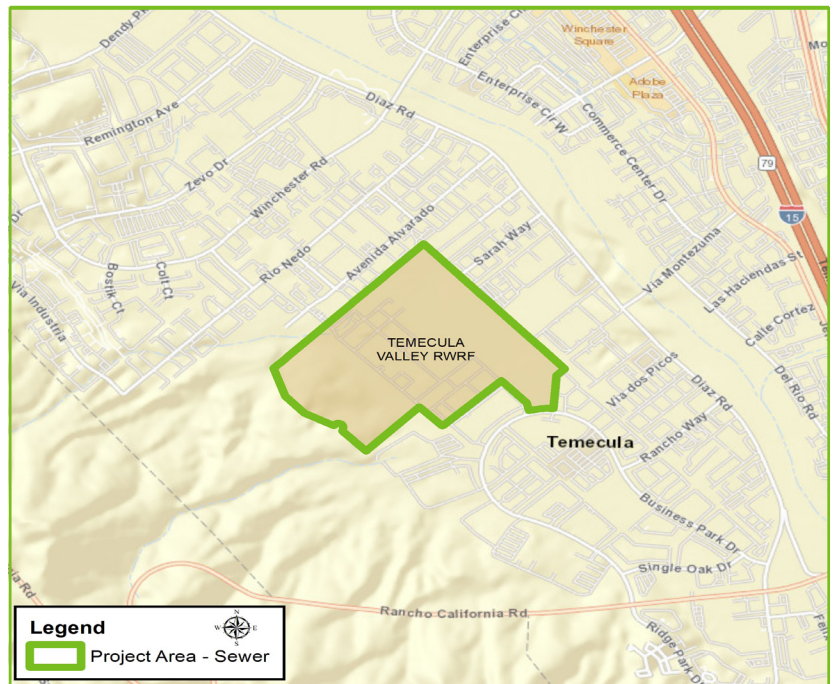
## PROJECT BUDGET

- Estimated Total Project Budget: \$14,887,000
- Estimated Construction Budget: \$12,552,000
- Estimated Grant Percentage: N/A

## PROJECT BENEFIT

EMWD protects public health through cost-effective projects and programs to manage biosolids, achieve long-term disposal independence through environmentally sustainable reuse, and the development of recycled water supplies.

## PROJECT LOCATION



## MORE INFORMATION

- CONTACT: Roxanne Rountree  
Public Affairs Manager
- PHONE: 951-928-3777 ext. 4391
- EMAIL: rountrr@emwd.org
- EMWD BOARD MEMBER:  
Director Regional  
Division No. R



# Temecula Valley Regional Water Reclamation Facility Dewatering Building Corrosion Mitigation

## PROJECT SUMMARY

This project will prepare the preliminary engineering study to mitigate corrosion in the building. Alternatives will be prepared for the modification of the fresh air intake and foul air extraction system, including the screw conveyors preliminary layout. Project Location: Temecula Valley Regional Water Reclamation Facility, 42565 Avenida Alvarado, Temecula, California 92590.

**CURRENT STATUS:** Bid / Construction

## ESTIMATED CONSTRUCTION SCHEDULE

- Start: Spring 2022
- Finish: Winter 2023/2024

## PROJECT BUDGET

- Estimated Total Project Budget: \$2,921,000
- Estimated Construction Budget: \$2,675,000
- Estimated Grant Percentage: N/A

## PROJECT BENEFIT

EMWD protects public health through cost-effective projects and programs to manage biosolids, achieve long-term disposal independence through environmentally sustainable reuse, and the development of recycled water supplies.

## PROJECT LOCATION



## MORE INFORMATION

- CONTACT: Roxanne Rountree  
Public Affairs Manager
- PHONE: 951-928-3777 ext. 4391
- EMAIL: rountrr@emwd.org
- EMWD BOARD MEMBER:  
Director Stephen J. Corona  
Division No. 2



# Temecula Valley Regional Water Reclamation Facility Erosion Control

## PROJECT SUMMARY

This project is to design and implement permanent erosion control measures at south hill site at Temecula Valley Regional Water Reclamation Facility. Location: 42565 Avenida Alvarado, Temecula, California.

**CURRENT STATUS:** Bid / Construction

## ESTIMATED CONSTRUCTION SCHEDULE

- Start: Summer 2024
- Finish: Winter 2024/2025

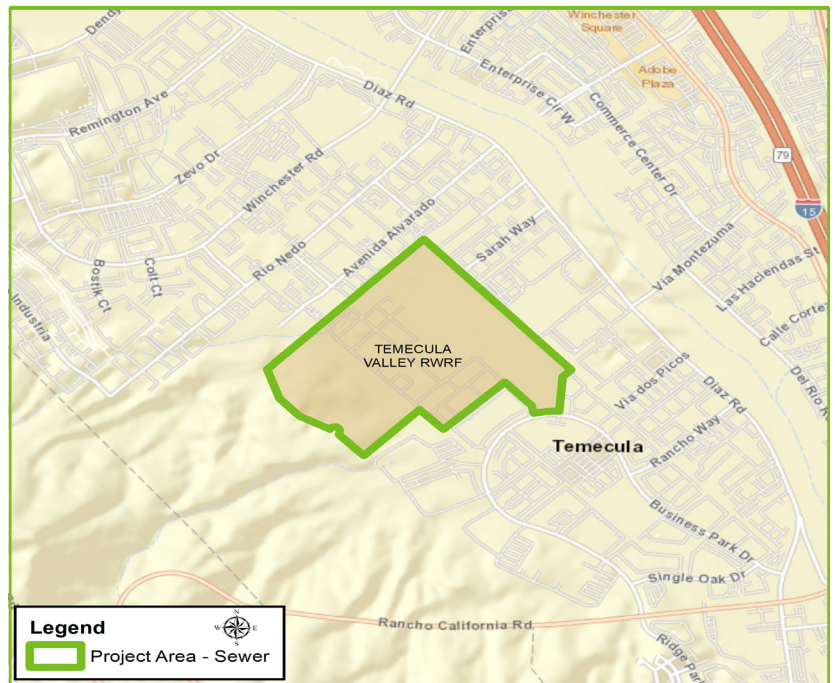
## PROJECT BUDGET

- Estimated Total Project Budget: \$280,000
- Estimated Construction Budget: \$219,000
- Estimated Grant Percentage: N/A

## PROJECT BENEFIT

EMWD protects public health through cost-effective projects and programs to manage biosolids, achieve long-term disposal independence through environmentally sustainable reuse, and the development of recycled water supplies.

## PROJECT LOCATION



## MORE INFORMATION

- CONTACT: Roxanne Rountree  
Public Affairs Manager
- PHONE: 951-928-3777 ext. 4391
- EMAIL: rountrr@emwd.org
- EMWD BOARD MEMBER:  
Director Stephen J. Corona  
Division No. 2

# Temecula Valley Regional Water Reclamation Facility Gravity Sand Filter Rehabilitation

## PROJECT SUMMARY

This project will modify power feed and control at the gravity filters motor operated valves and install new motor operators, conduit, and cables for the existing slide gates at the headworks. Project Location: Temecula Valley Regional Water Reclamation Facility, 42565 Avenida Alvarado, Temecula, CA 92590.

## CURRENT STATUS:

Design

## ESTIMATED CONSTRUCTION SCHEDULE

- Start: Summer 2024
- Finish: Summer 2025

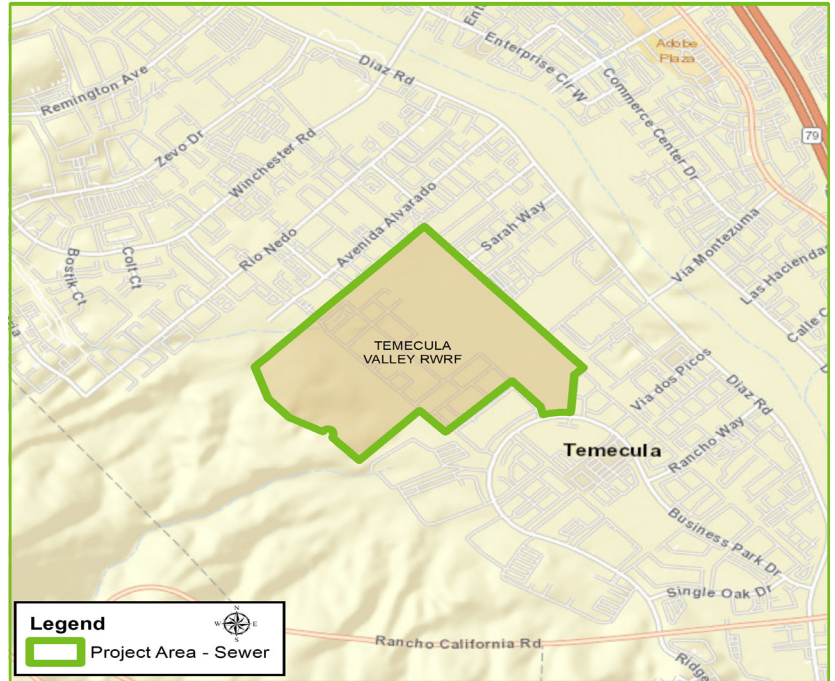
## PROJECT BUDGET

- Estimated Total Project Budget: \$996,000
- Estimated Construction Budget: \$883,000
- Estimated Grant Percentage: N/A

## PROJECT BENEFIT

EMWD protects public health through cost-effective projects and programs to manage biosolids, achieve long-term disposal independence through environmentally sustainable reuse, and the development of recycled water supplies.

## PROJECT LOCATION



## MORE INFORMATION

- CONTACT: Roxanne Rountree  
Public Affairs Manager
- PHONE: 951-928-3777 ext. 4391
- EMAIL: rountrr@emwd.org
- EMWD BOARD MEMBER:  
Director Stephen J. Corona  
Division No. 2

# Temecula Valley Regional Water Reclamation Facility Plant 1 Air Line Replacement

## PROJECT SUMMARY

This project will design and construct a replacement aeration air system for Plant 1 consisting of above-grade stainless steel piping, providing a more durable material and better access for ongoing maintenance activities. Project Location: TVRWRF, 42565 Avenida Alvarado, Temecula, California 92590.

**CURRENT STATUS:** Design

## ESTIMATED CONSTRUCTION SCHEDULE

- Start: Spring 2024
- Finish: Summer 2025

## PROJECT BUDGET

- Estimated Total Project Budget: \$10,000,000
- Estimated Construction Budget: \$8,200,000
- Estimated Grant Percentage: N/A

## PROJECT BENEFIT

EMWD protects public health through cost-effective projects and programs to manage biosolids, achieve long-term disposal independence through environmentally sustainable reuse, and the development of recycled water supplies.

## PROJECT LOCATION



## MORE INFORMATION

- CONTACT: Roxanne Rountree  
Public Affairs Manager
- PHONE: 951-928-3777 ext. 4391
- EMAIL: rountrr@emwd.org
- EMWD BOARD MEMBER:  
Director Stephen J. Corona  
Division No. 2



# Temecula Valley Regional Water Reclamation Facility Plant 3 Electrical Modifications

## PROJECT SUMMARY

The TVRWRF has been experiencing electrical issues within Plant 3. The Membrane-Bioreactor (MBR) mixers have experienced intermittent failures along with the discovery of severe corrosion, possibly attributed to issues with the Plant 3 grounding issues. Other electrical issues reported include potential bonding issues with aluminum handrail, tripping of ground fault circuit interrupters, electrical damage to sampling units, and failing network cards in RIO cabinets. The initial Project phase will be electrical investigations to determine cause of said issues. Design and construction of repairs and/or retrofits will follow the investigation phase. Project Location: 42565 Avenida Alvarado, Temecula, CA 92590.

## CURRENT STATUS:

**Planning**

## ESTIMATED CONSTRUCTION SCHEDULE

- Start: Winter 2024/2025
- Finish: Summer 2026

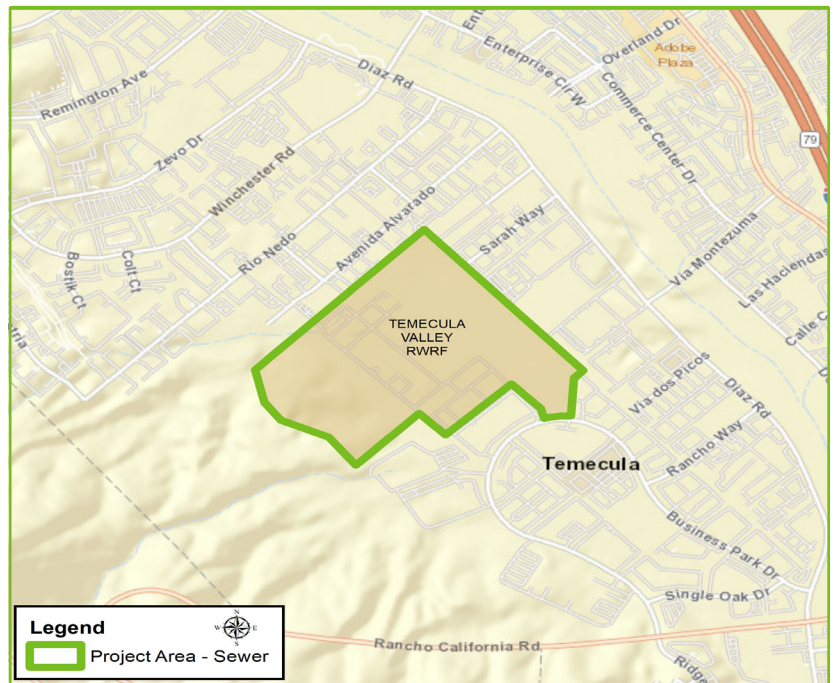
## PROJECT BUDGET

- Estimated Total Project Budget: \$1,032,000
- Estimated Construction Budget: \$800,000
- Estimated Grant Percentage: N/A

## PROJECT BENEFIT

EMWD protects public health through cost-effective projects and programs to manage biosolids, achieve long-term disposal independence through environmentally sustainable reuse, and the development of recycled water supplies.

## PROJECT LOCATION



## MORE INFORMATION

- CONTACT: Roxanne Rountree  
Public Affairs Manager
- PHONE: 951-928-3777 ext. 4391
- EMAIL: rountrr@emwd.org
- EMWD BOARD MEMBER:  
Director Stephen J. Corona  
Division No. 2

# Temecula Valley Regional Water Reclamation Facility TEPS VFD Installation

## PROJECT SUMMARY

This project will replace existing soft starters at TEPS electrical building with Variable Frequency Drives (VFD). Project Location: Temecula Valley Regional Water Reclamation Facility, 42565 Avenida Alvarado, Temecula, CA 92590.

**CURRENT STATUS:** Design

## ESTIMATED CONSTRUCTION SCHEDULE

- Start: Spring 2024
- Finish: Spring 2025

## PROJECT BUDGET

- Estimated Total Project Budget: \$3,338,000
- Estimated Construction Budget: \$3,100,000
- Estimated Grant Percentage: N/A

## PROJECT BENEFIT

EMWD protects public health through cost-effective projects and programs to manage biosolids, achieve long-term disposal independence through environmentally sustainable reuse, and the development of recycled water supplies.

## PROJECT LOCATION



## MORE INFORMATION

- CONTACT: Roxanne Rountree  
Public Affairs Manager
- PHONE: 951-928-3777 ext. 4391
- EMAIL: rountrr@emwd.org
- EMWD BOARD MEMBER:  
Director Stephen J. Corona  
Division No. 2

# Warm Springs Lift Station Replacement

## PROJECT SUMMARY

Warm Springs Lift Station Replacement project is the design and construction of a new regional sewage lift station with an initial capacity of 27 MGD, including site work, yard piping, off-site piping, civil paving and grading, structural, architectural, mechanical, electrical and instrumentation, infrastructure in support of future odor control system, and demolition of the existing lift station. Project is located at 27900 Diaz Road, in the City of Temecula, at intersection of Zevo Drive.

### CURRENT STATUS:

Design

### ESTIMATED CONSTRUCTION SCHEDULE

- Start: Fall 2030
- Finish: Summer 2033

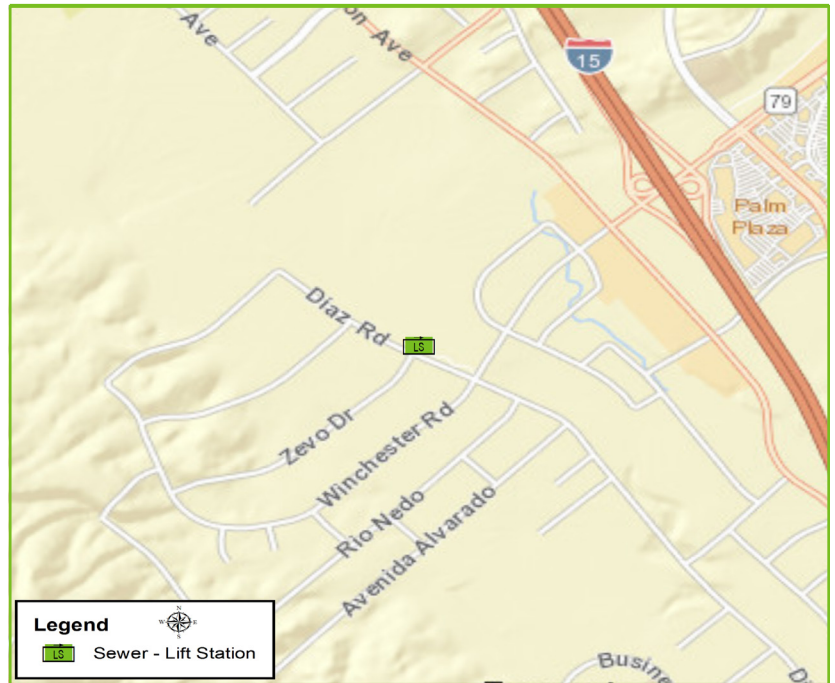
### PROJECT BUDGET

- Estimated Total Project Budget: \$36,225,000
- Estimated Construction Budget: \$29,705,000
- Estimated Grant Percentage: N/A

### PROJECT BENEFIT

EMWD strives to protect public health through the safe and reliable transmission of wastewater from homes and business to its regional water reclamation facilities.

## PROJECT LOCATION



## MORE INFORMATION

- CONTACT: Roxanne Rountree  
Public Affairs Manager
- PHONE: 951-928-3777 ext. 4391
- EMAIL: rountrr@emwd.org
- EMWD BOARD MEMBER:  
Director Stephen J. Corona  
Division No. 2



# Recycled Water Facilities Master Plan Update

## PROJECT SUMMARY

This project is intended to provide the District with an updated list and schedule of long and short-term infrastructure projects. The project includes the following objectives: update to the hydraulic model incorporating AMI meter data and changes to demand patterns and projected wastewater flows and demands. Compile and assess opportunities for system optimization; recommend and prioritize solutions; and lay out a road map to achieve the District-defined vision for the RW system. Provide an updated project list and roadmap addressing short term system needs while facilitating future Recycled Water Strategic updates pursuant to regional water supply studies currently underway.

### CURRENT STATUS:

**Planning**

### ESTIMATED CONSTRUCTION SCHEDULE

- Start: N/A
- Finish: N/A

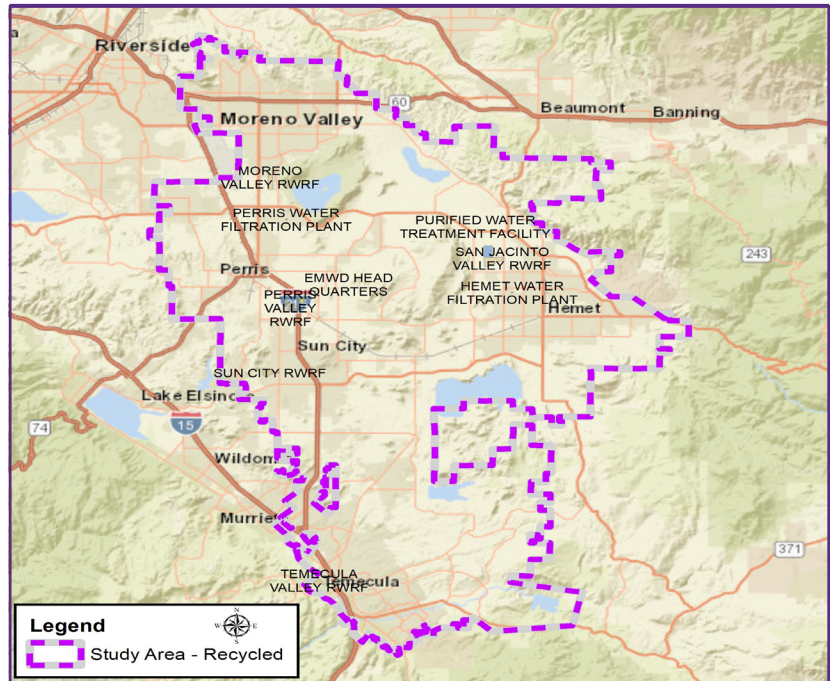
### PROJECT BUDGET

- Estimated Total Project Budget: \$320,000
- Estimated Construction Budget: N/A
- Estimated Grant Percentage: N/A

### PROJECT BENEFIT

EMWD's recycled water conveyance system is designed to provide reliability and redundancy in delivering high-quality recycled water in a cost-effective manner to help reduce reliance on drinking water supplies for irrigation and industrial purposes.

## PROJECT LOCATION



## MORE INFORMATION

- CONTACT: Roxanne Rountree  
Public Affairs Manager
- PHONE: 951-928-3777 ext. 4391
- EMAIL: rountrr@emwd.org
- EMWD BOARD MEMBER:  
Director Regional  
Division No. R

# MVRWRF - PVRWRF Engine Room Ventilation Monitoring

## PROJECT SUMMARY

This project will install ventilation monitoring for the Genset room at PVRWRF, MVRWRF Plant-2 Genset Room, MVRWRF Plant-1 Blower Building, and MVRWRF Plant-1 Genset room. Ventilation fans will be monitored to alarm staff when it is not running. Code requires continuous fan operation for NEC compliance. Project Location: MVRWRF, 17140 Kitching Street, Moreno Valley, CA 92551

## CURRENT STATUS:

**Bid / Construction**

## ESTIMATED CONSTRUCTION SCHEDULE

- Start: Fall 2023
- Finish: Spring 2024

## PROJECT BUDGET

- Estimated Total Project Budget: \$429,000
- Estimated Construction Budget: \$422,000
- Estimated Grant Percentage: N/A

## PROJECT BENEFIT

EMWD protects public health through cost-effective projects and programs to manage biosolids, achieve long-term disposal independence through environmentally sustainable reuse, and the development of recycled water supplies.

## PROJECT LOCATION



## MORE INFORMATION

- CONTACT: Alma Ramirez  
Public Affairs Officer II
- PHONE: 951-928-3777 ext. 4370
- EMAIL: ramireal@emwd.org
- EMWD BOARD MEMBER:  
Director Regional  
Division No. R

# Regional Water Reclamation Facilities Aeration Basins Rehabilitation and Diffuser Replacement

## PROJECT SUMMARY

This project will replace the existing Parkson aeration diffusers panels at all four active Regional Water Reclamation Facilities. The existing diffusers have reached the end of their useful life and Parkson is no longer supporting the product configuration currently installed at the District facilities nor supplying replacement parts for the existing panel diffusers. Project Location: PVRWRF, SJVRWRF, TVRWRF

## CURRENT STATUS:

Design

## ESTIMATED CONSTRUCTION SCHEDULE

- Start: Fall 2024
- Finish: Summer 2027

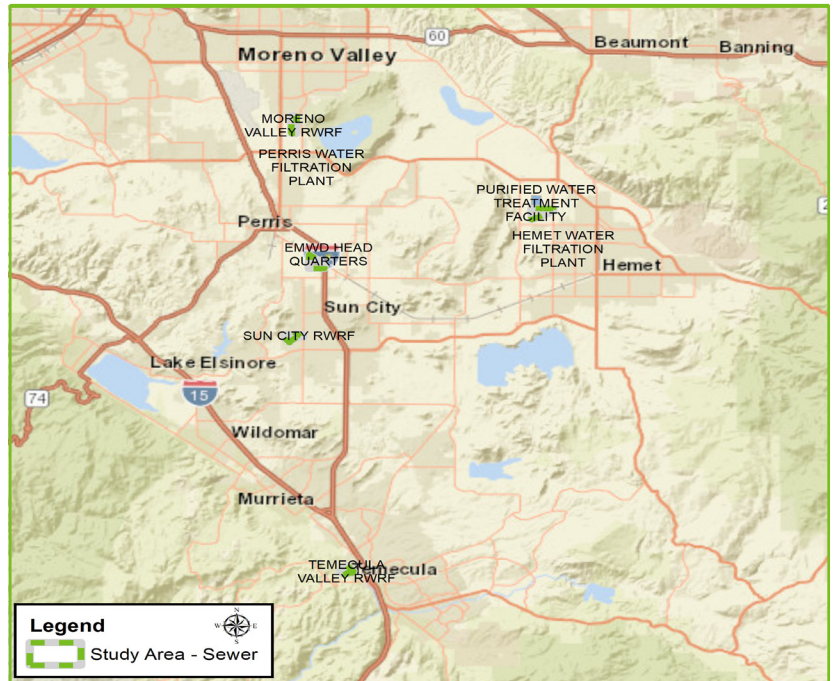
## PROJECT BUDGET

- Estimated Total Project Budget: \$15,036,000
- Estimated Construction Budget: \$12,000,000
- Estimated Grant Percentage: N/A

## PROJECT BENEFIT

EMWD protects public health through cost-effective projects and programs to manage biosolids, achieve long-term disposal independence through environmentally sustainable reuse, and the development of recycled water supplies.

## PROJECT LOCATION



## MORE INFORMATION

- CONTACT: Alma Ramirez  
Public Affairs Officer II
- PHONE: 951-928-3777 ext. 4370
- EMAIL: ramireal@emwd.org
- EMWD BOARD MEMBER:  
Director Regional  
Division No. R



# Regional Water Reclamation Facilities Biosolids Master Plan

## PROJECT SUMMARY

This study will explore short-term, mid-term, and long-term options for the handling of the biosolids produced by the District. The goal of this study is to identify and comprehensively evaluate the strategies, technologies, and approaches that fit District biosolids management goals. Project Location: TVRWRF, PVRWRF, SJVRWRF, and MVRWRF

**CURRENT STATUS:** Planning

## ESTIMATED CONSTRUCTION SCHEDULE

- Start: N/A
- Finish: N/A

## PROJECT BUDGET

- Estimated Total Project Budget: \$1,022,000
- Estimated Construction Budget: N/A
- Estimated Grant Percentage: N/A

## PROJECT BENEFIT

EMWD protects public health through cost-effective projects and programs to manage biosolids, achieve long-term disposal independence through environmentally sustainable reuse, and the development of recycled water supplies.

## PROJECT LOCATION



## MORE INFORMATION

- CONTACT: Alma Ramirez  
Public Affairs Officer II
- PHONE: 951-928-3777 ext. 4370
- EMAIL: ramireal@emwd.org
- EMWD BOARD MEMBER:  
Director Regional  
Division No. R

# Regional Water Reclamation Facility Digester Gas Utilization Solicitation

## PROJECT SUMMARY

Development of a request for interest (RFI) and a request for proposal (RFP) to solicit vendors and/or other parties to accept and utilize digester gas at our four Regional Water Reclamation Facilities (RWRFs). Project Location: 770 North Sanderson Avenue, San Jacinto, California 92583; 17140 Kitching Street, Moreno Valley, California 92551; 42565 Avenida Alvarado, Temecula, California 92590; and 1301 Case Road, Perris, California 92570.

**CURRENT STATUS:** Planning

## ESTIMATED CONSTRUCTION SCHEDULE

- Start: N/A
- Finish: N/A

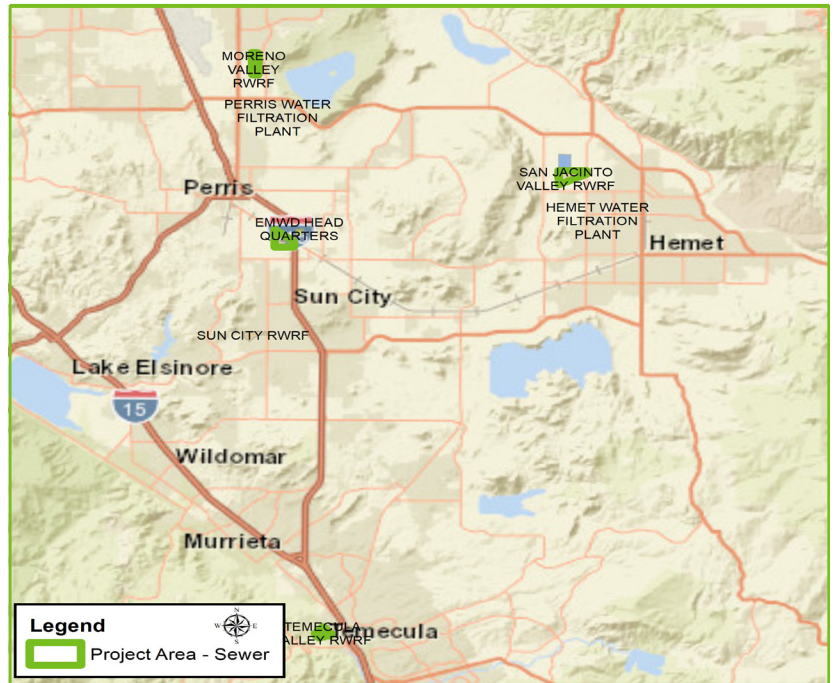
## PROJECT BUDGET

- Estimated Total Project Budget: \$175,000
- Estimated Construction Budget: N/A
- Estimated Grant Percentage: N/A

## PROJECT BENEFIT

EMWD protects public health through cost-effective projects and programs to manage biosolids, achieve long-term disposal independence through environmentally sustainable reuse, and the development of recycled water supplies.

## PROJECT LOCATION



## MORE INFORMATION

- CONTACT: Alma Ramirez  
Public Affairs Officer II
- PHONE: 951-928-3777 ext. 4370
- EMAIL: ramireal@emwd.org
- EMWD BOARD MEMBER:  
Director Regional  
Division No. R

# RWRF Hydrogen Sulfide Mitigation Study

## PROJECT SUMMARY

This study will develop and evaluate alternative hydrogen sulfide mitigation strategies to reduce or eliminate the use of ferric chloride at our RWRFs. Project Location: TVRWRF, PVRWRF, SJVRWRF and MVRWRF.

### CURRENT STATUS:

**Planning**

### ESTIMATED CONSTRUCTION SCHEDULE

- Start: N/A
- Finish: N/A

### PROJECT BUDGET

- Estimated Total Project Budget: \$173,000
- Estimated Construction Budget: N/A
- Estimated Grant Percentage: N/A

### PROJECT BENEFIT

EMWD protects public health through cost-effective projects and programs to manage biosolids, achieve long-term disposal independence through environmentally sustainable reuse, and the development of recycled water supplies.

## PROJECT LOCATION



## MORE INFORMATION

- CONTACT: Alma Ramirez  
Public Affairs Officer II
- PHONE: 951-928-3777 ext. 4370
- EMAIL: ramireal@emwd.org
- EMWD BOARD MEMBER:  
Director Regional  
Division No. R



# Regional Water Reclamation Facilities Rehabilitation Planning Study

## PROJECT SUMMARY

Staff will be conducting an assessment at all four active Regional Water Reclamation Facilities. The assessment will involve both a visual assessment of equipment and structure conditions as well as an assessment of plant operations. The visual condition assessment will focus on the deficiencies of the existing equipment and needed improvements to maintain reliability in the future. The operational assessment will gather insight from multiple operations and maintenance staff about issues that may not be captured through a visual assessment.

**CURRENT STATUS:** Planning

## ESTIMATED CONSTRUCTION SCHEDULE

- Start: N/A
- Finish: N/A

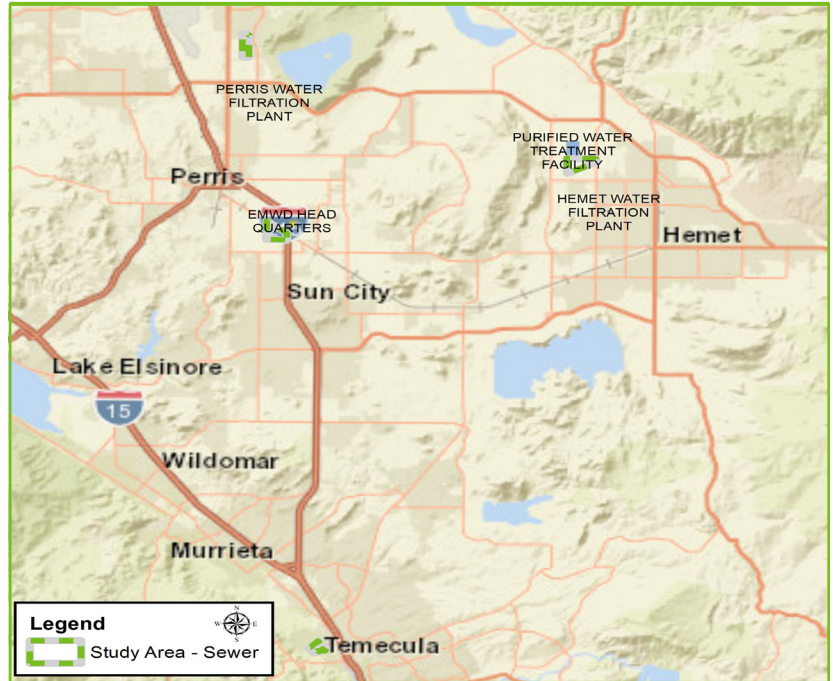
## PROJECT BUDGET

- Estimated Total Project Budget: \$927,000
- Estimated Construction Budget: N/A
- Estimated Grant Percentage: N/A

## PROJECT BENEFIT

EMWD protects public health through cost-effective projects and programs to manage biosolids, achieve long-term disposal independence through environmentally sustainable reuse, and the development of recycled water supplies.

## PROJECT LOCATION



## MORE INFORMATION

- CONTACT: Alma Ramirez  
Public Affairs Officer II
- PHONE: 951-928-3777 ext. 4370
- EMAIL: ramireal@emwd.org
- EMWD BOARD MEMBER:  
Director Regional  
Division No. R

# Wastewater Collection System Condition Assessment

## PROJECT SUMMARY

Project consists of a GIS study to develop risk and consequences criteria to evaluate districtwide wastewater collection system, and identifying areas of concerns for field inspection to develop rehabilitation and replacement recommendations for the planning of short-term, mid-term, and long-term Capital Improvement Program. Project Location: Wastewater collection system - Districtwide.

## CURRENT STATUS:

Planning

## ESTIMATED CONSTRUCTION SCHEDULE

- Start: N/A
- Finish: N/A

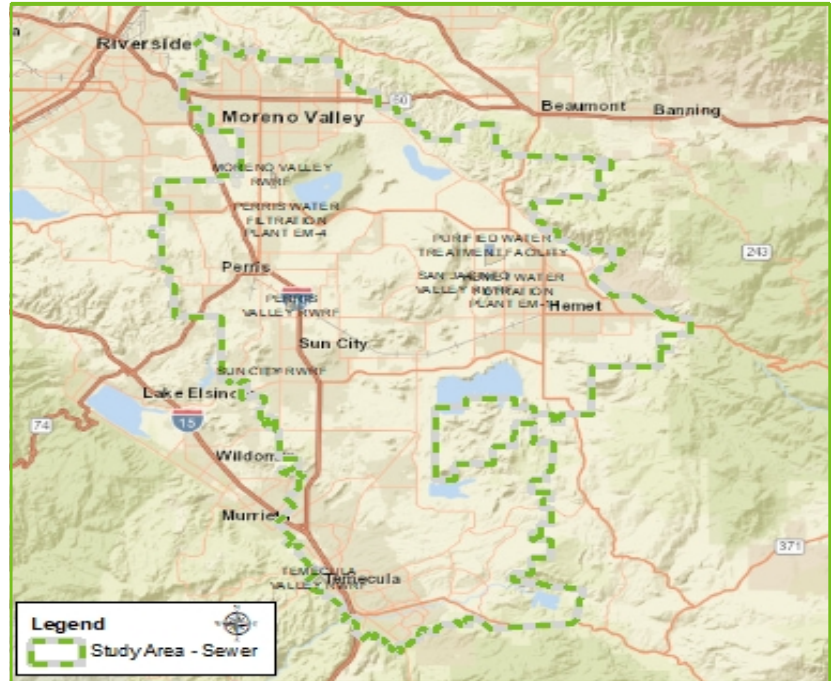
## PROJECT BUDGET

- Estimated Total Project Budget: \$508,000
- Estimated Construction Budget: N/A
- Estimated Grant Percentage: N/A

## PROJECT BENEFIT

EMWD strives to protect public health through the safe and reliable transmission of wastewater from homes and business to its regional water reclamation facilities.

## PROJECT LOCATION



## MORE INFORMATION

- CONTACT: Roxanne Rountree  
Public Affairs Manager
- PHONE: 951-928-3777 ext. 4391
- EMAIL: rountrr@emwd.org
- EMWD BOARD MEMBER:  
Director Regional  
Division No. R

# Communication Towers Install

## PROJECT SUMMARY

The proposed project will construct three communication towers at Mission II Tank Site, Rancho Glen Oaks Tank Site, and Moreno Valley Regional Water Reclamation Facility. Project Location: Mission II Tank 41225 Polly Butte Rd, Hemet, CA 92544; Rancho Glen Oaks Tank Site 39987 Esplendida Way, Temecula, CA 92592; MVRWRF 17140 Kitching, Moreno Valley, CA 92551.

## CURRENT STATUS:

Design

## ESTIMATED CONSTRUCTION SCHEDULE

- Start: Summer 2024
- Finish: Summer 2025

## PROJECT BUDGET

- Estimated Total Project Budget: \$1,260,000
- Estimated Construction Budget: \$984,000
- Estimated Grant Percentage: N/A

## PROJECT BENEFIT

EMWD's mission is to deliver value to our customers and the communities we serve by providing safe, reliable, economical and environmentally sustainable water, wastewater and recycled water services.

## PROJECT LOCATION



## MORE INFORMATION

- CONTACT: Kevin Pearson  
Public Affairs Officer II
- PHONE: 951-928-3777 ext. 4219
- EMAIL: pearsonk@emwd.org
- EMWD BOARD MEMBER:  
Director Regional  
Division No. R



THIS PAGE INTENTIONALLY LEFT BLANK