

**MATERIAL LIST** (ALL MATERIALS TO BE APPROVED BY EMWD)

ITEM	QTY	DESCRIPTION
①	1 EA	FLANGED PRESSURE REGULATOR W/(4) FOUR-PORT BONNET
②	2 EA	F X VICTAULIC SPOOL (CUT TO FIT)
③	1 EA	VICTAULIC COUPLING
④	2 EA	F X F 90° ELBOW
⑤	3 EA	F X F RSGV VALVE (6" VALVES)
⑥	2 EA	FLANGED TEE STEEL OR D.I. ( RUN SIZE SAME AS MAIN REGULATOR NO. 1)
⑦	2 EA	STAINLESS STEEL BALL VALVE W/CLOSE NIPPLE (SIZE AS REQUIRED)
⑧	2 EA	COPPER OR BRASS PIPE (SIZE AS REQUIRED)
⑨	2 EA	45° COPPER OR BRASS ELBOW W/CLOSE NIPPLE (SIZE AS REQUIRED)
⑩	1 EA	THREADED GLOBE DIRECT-ACTING PRESSURE REGULATOR W/UNION (SIZE AS REQUIRED)
⑪	2 EA	F X F CML&P STEEL OR D.I. PIPE (MIN 8" I.D.)
⑫	2 EA	F X F REDUCER (SIZE AS REQUIRED)
⑬	4 EA	F X F CML&P STEEL OR D.I. PIPE SPOOL (SIZED AS REQUIRED NO. 1 REG.)
⑭	...	#4 REBAR GR 60 12" O.C. EA. WAY
⑮	...	PREFORMED EXPANSION PAPER PER ASTM 1751
⑯	1 EA	CONCRETE SLAB (LENGTH= 12" LARGER AND WIDTH= 12" LARGER THAN ENCLOSURE )
⑰	1 EA	COPPER OR BRASS UNION (SIZE AS REQUIRED)
⑱	2 EA	TWO PIECE SPLIT ENCLOSURE (SEE NOTES ON SHEET 2)
⑲	2 EA	THREADED X F CML&P STEEL OR D.I. PIPE SPOOL (SIZED AS REQUIRED NO. 10)
⑳	2 EA	STEEL OR D.I. COMPANION FLANGE (SIZE AS REQUIRED)
㉑	2 EA	8" VALVE BOX (CAST IRON COVER WITH THE LETTERS "LW")
㉒	2 EA	LOCATOR WIRE (14 GAUGE SOLID COPPER WIRE UF, THWN, OR THHN)
㉓	2 EA	ADJUSTABLE VALVE SUPPORT

**REGULATOR TABLE**

MAIN REGULATOR NO. 1 (SIZE)	BY-PASS REGULATOR NO. 10 (SIZE)
4"	2" Direct-Acting Reg.
6"	2" Direct-Acting Reg.

**PRESSURE REGULATOR**

SIZE	RECOMMENDED FLOW (HEAD LOSS VARIES)
2"	15 GPM - 210 GPM
4"	50 GPM - 800 GPM
6"	115 GPM - 1800 GPM

**LOCATOR WIRE NOTES:**

1. LOCATOR WIRE TO BE 14 GAUGE SOLID COPPER WIRE UF, THWN, OR THHN PER B-656.
2. 6 FEET OF LOCATOR WIRE SHALL BE LEFT COILED WITHIN THE VALVE BOX.
3. CONNECT INTO THE EMWD PIPELINE LOCATOR WIRE WITH A DRYCONNECT DIRECT BURY WIRE CONNECTOR.
4. WIRE TO BE CONTINUOUS STRAND.
5. LOCATOR WIRE SHALL BE SECURED TO THE WATER LATERAL PIPELINE WITH TAPE EVERY 10 FEET.
6. A LOCATIBILITY TEST IS TO BE PERFORMED ON LOCATOR WIRE PRIOR TO FACILITY ACCEPTANCE.

REVISIONS				APPROVALS			EASTERN MUNICIPAL WATER DISTRICT STANDARD DRAWING	
NO.	DATE	INITIAL	DESCRIPTION	APP'D	DATE	DESIGN		
①	9/30/24	GS	REVISED DEMENTIONS, NOTES, ENCLOSURE DETAIL, ADDED LOCATOR WIRE, VALVE SUPPORTS, & VALVE BOXES	<i>SL</i>	9/30/24	DESIGN	<i>CM</i> 7/14/05	
②	3/10/22	GS	UPDATED TITLE BLOCK, LOGO, LINE WORK, FONT, REG. CONFIG. ADDED SECOND SHEET FOR PLACEMENT DETAILS AND NOTES	<i>AGA</i>	3/10/22	CONSTRUCTION		
						INSPECTION	<i>CD</i> 7/14/05	
						OPERATIONS	<i>KG</i> 7/15/05	
						SUBMITTED	<i>VJB</i> 7/18/05	

**emwd** EASTERN MUNICIPAL WATER DISTRICT

**4" & 6" PRESSURE REGULATOR ABOVE GROUND INSTALLATION**

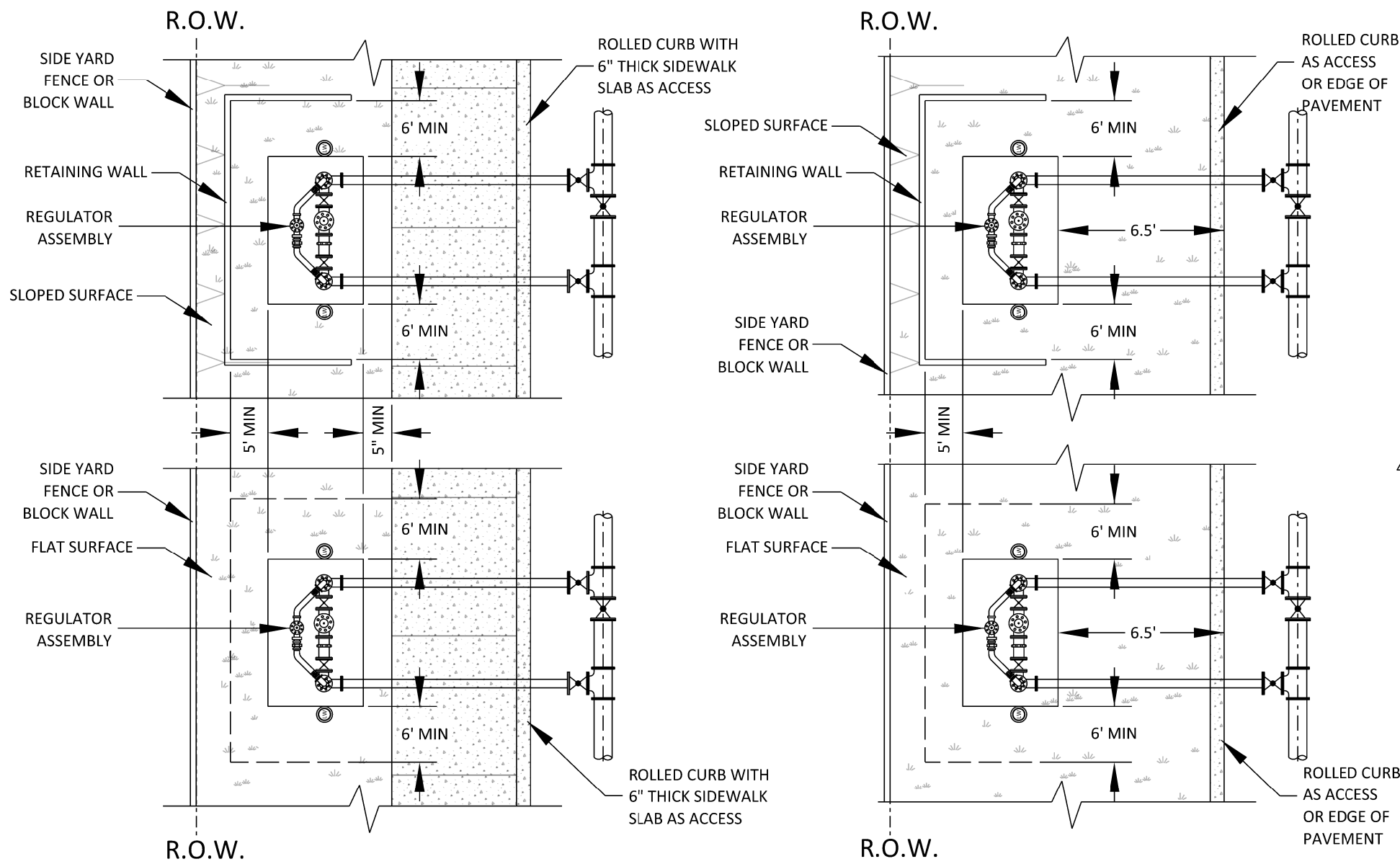
SHEET 1 of 2

REFERENCES: SUPERCEDES B-368	SCALE: NONE	RECOMMENDED _____	
FILE I.D.:	DRAWN BY: CM	DIRECTOR OF ENGINEERING	DATE

APPROVED *Charlie Bachmann* ASSISTANT GENERAL MANAGER

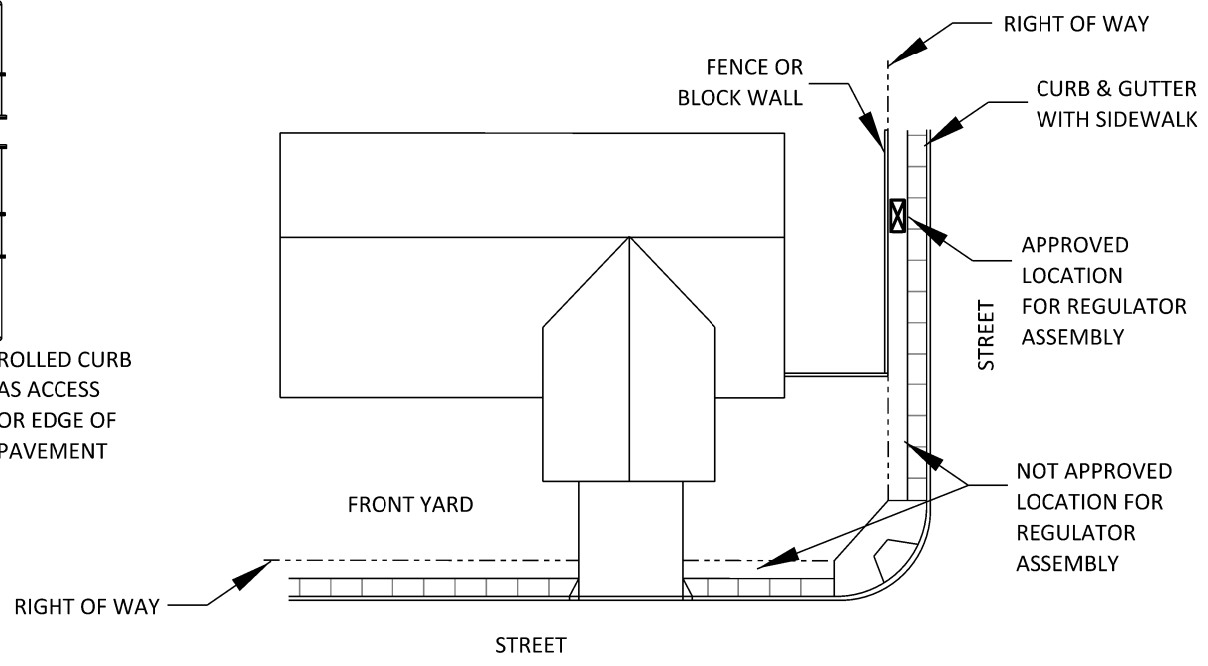
10/11/05 DATE

B-932



**NOTES:**

1. PRESSURE REGULATOR SHALL BE 12" ABOVE CONCRETE PAD.
2. BELOW GROUND INSTALLATION OF PRESSURE REGULATOR TO BE ALLOWED ONLY WHEN ABOVE GROUND ASSEMBLY IS NOT PERMITTED BY THE GOVERNING AGENCY.
3. IN AREAS PRONE TO FREEZING, BYPASS PIPING SHALL BE WRAPPED WITH INSULATING TAPE.
4. ALL CML&C PIPE TO MEET EMWD SPECIFICATION 15061.
5. TEES OR CONNECTIONS SHALL NOT BE ALLOWED BETWEEN EMWD RSGV AND PRESSURE REGULATOR.
6. ENCLOSURE MANUFACTURERS, OR APPROVED EQUAL:
  - A. TEMECULA PRECISION FABIRICATION INC, TEMECULA, CA.
  - B. LE MEUR WELDING & MANUFACTURING, WILMINGTON, CA.
7. EMWD O&M MAY REQUIRE A VERTICAL FLOW METER ON INLET PIPING. INSTALL AN EQUAL LENGTH SPOOL ON OUTLET PIPING.
8. PRESSURE REGULATOR ASSEMBLY SHALL NOT EXCEED 5' IN HEIGHT.
9. INSTALLATION LOCATION MAY REQUIRE BOLLARDS. BOLLARDS TO BE INSTALLED AT THE DIRECTION OF THE EMWD ENGINEER AND/OR EMWD INSPECTOR PER B-665.
10. MINIMUM 8" CLEARANCE FROM TOP OF REGULATOR TO TOP OF ENCLOSURE.
11. MINIMUM 6" CLEARANCE FROM PRESSURE REGULATOR ASSEMBLY TO ALL SIDES OF ENCLOSURE.
12. PRESSURE REGULATOR ASSEMBLY INSTALLATION NOT PERMITTED IN FRONT YARDS OR SIDE YARDS WHERE NO FENCE OR BLOCK WALLS EXIST.



**REGULATOR ASSEMBLY INSTALLATION DETAIL**  
NOT TO SCALE

REVISIONS				APPROVALS			EASTERN MUNICIPAL WATER DISTRICT		EASTERN MUNICIPAL WATER DISTRICT STANDARD DRAWING		
NO.	DATE	INITIAL	DESCRIPTION	APP'D	DATE	DESIGN			INITIAL	DATE	4" & 6" PRESSURE REGULATOR ABOVE GROUND INSTALLATION
2	9/30/24	GS	REVISED DEMENTIONS, NOTES, & ENCLOSURE MANUFACTURERS, ADDED LOCATOR WIRE VALVE BOXES	SL	9/30/24	CONSTRUCTION	CM	7/14/05	APPROVED <i>Charlie Bachmann</i> ASSISTANT GENERAL MANAGER 10/11/05 DATE	B-932	
1	3/10/22	GS	UPDATED TITLE BLOCK, LOGO, LINE WORK, FONT, REG. CONFIG. ADDED SECOND SHEET FOR PLACEMENT DETAILS AND NOTES	AGA	3/10/22	OPERATIONS	KG	7/15/05			
						SUBMITTED	VJB	7/18/05			
						RECOMMENDED					
REFERENCES: SUPERCEDES B-368				SCALE: NONE			DIRECTOR OF ENGINEERING				
FILE I.D.: \kauai\eng\std dwgs\B-932.dgn				DRAWN BY: CM			DATE				

