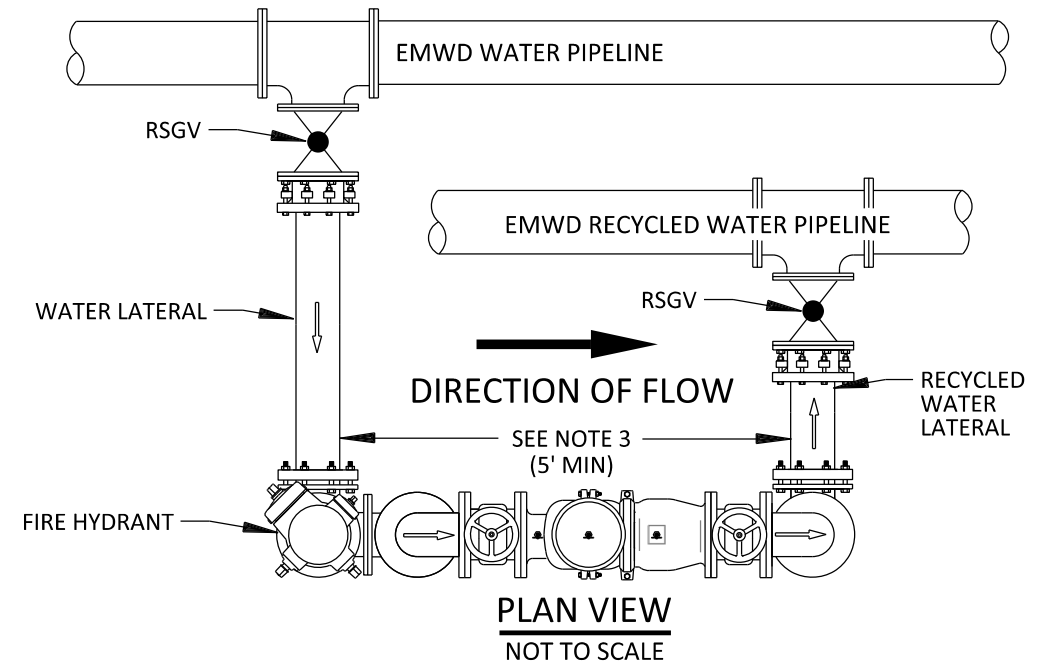
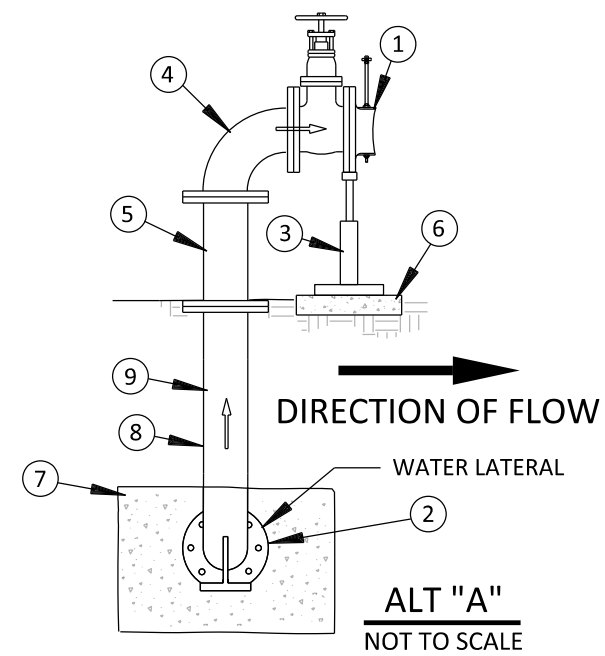
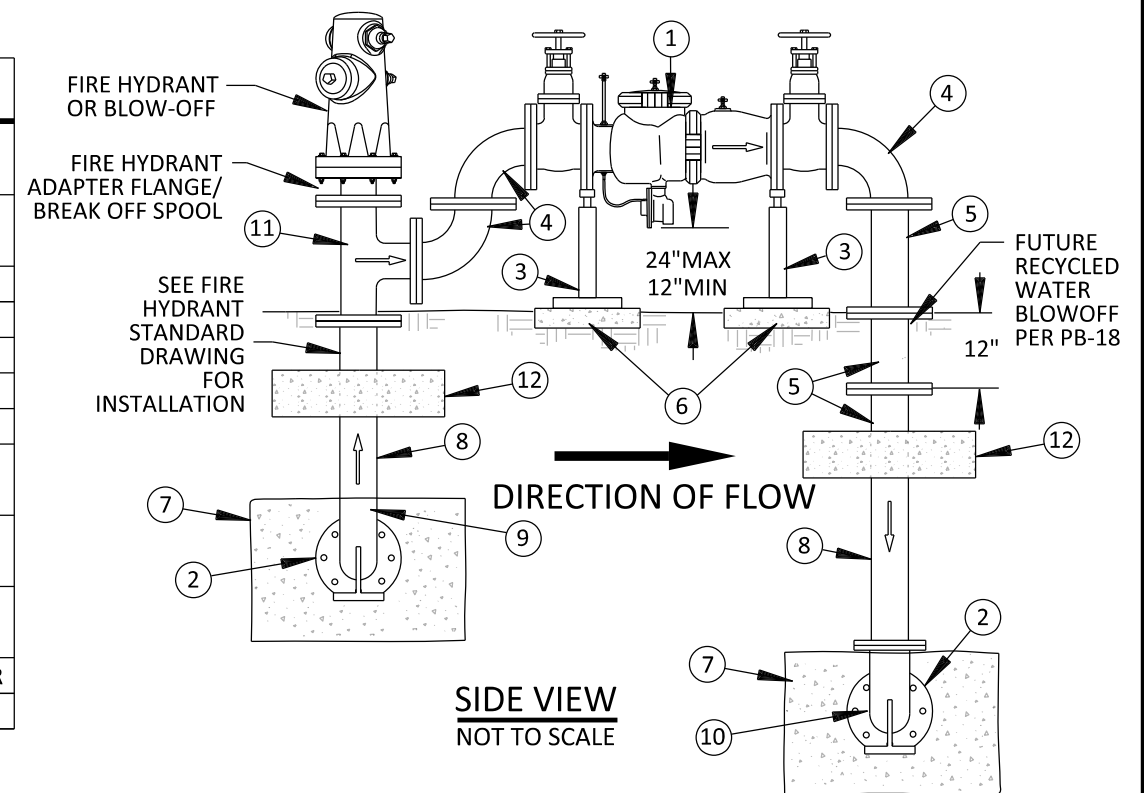


**NOTES:**

1. PROPOSED OR EXISTING FIRE HYDRANT SHALL BE USED WHEN DESIGNING A FACILITY INTERTIE. ALT "A" SHALL BE USED ONLY WHEN A FIRE HYDRANT IS NOT PERMITTED.
2. PROVIDE A USC APPROVED REDUCED PRESSURE PRICIPLE BACKFLOW PREVENTION ASSEMBLY (RP) AS DESIGNATED BY EMWD APPROVED MATERIALS LIST SPECIFICATIONS. RPDA WILL NOT BE PERMITTED FOR INTERTIE.
3. SIZING AND SEPARATION BETWEEN THE POTABLE AND RECYCLED WATER LATERALS SHALL BE AT THE DIRECTION OF THE EMWD ENGINEER.
4. CERTIFICATION TESTING IS REQUIRED IMMEDIATELY AFTER AN ASSEMBLY IS NEWLY INSTALLED, RELOCATED, REPLACED, OR REPAIRED PER EMWD ORD. 69 PRIOR TO ANY WATER DELIVERY.
5. BACKFLOW PREVENTION ASSEMBLY SIZE SHALL BE PER EMWD APPROVED CIVIL DRAWING.
6. NO UNAUTHORIZED OUTLETS, TEES, OR CONNECTIONS SHALL BE MADE ON THE BACKFLOW PREVENTION ASSEMBLY.
7. BACKFLOW PREVENTION ASSEMBLIES SHALL MAINTAIN A VERTICAL CLEARANCE FROM THE LOWEST POINT OF 12 INCHES (MINIMUM) TO 24 INCHES (MAXIMUM) ABOVE FINISHED GRADE, WITH SIDE AND TOP CLEARANCES OF 36 INCHES (MINIMUM) FROM ANY OBSTRUCTIONS IN ALL DIRECTIONS.
8. SCHEDULE BACKFLOW TEST PRIOR TO ACTIVATION AT 951-928-3777 EXT. 4938.
9. PRESSURE TEST PER EMWD SPECIFICATIONS.
10. ALL MATERIALS SHALL BE FROM EMWD'S APPROVED MATERIAL LIST.
11. ALTERNATE MATERIALS MAY BE USED UPON APPROVAL BY EMWD.
12. ALL CML&C PIPE SHALL MEET EMWD SPECIFICATION 15061.
13. ALL D.I. PIPE SHALL MEET EMWD SPEC. SECTION 15057.
14. JOINT RESTRAINT DEVICE SHALL BE USED ON ALL PIPELINE JOINTS AND WATER APPURTENANCE.
15. BURIED DIP AND FITTINGS SHALL HAVE V-BIO ENHANCED POLYETHYLENE ENCASEMENT PER ANSI/AWWA C105/A21.5 REQUIREMENTS.
16. FIELD COATING FOR EXPOSED STEEL PIPE SHALL BE PER EMWD SPECIFICATIONS AND APPROVED MATERIALS.
17. ALL ABOVE GRADE BARE IRON AND STEEL SHALL BE PAINTED PER EMWD SPECIFICATIONS.
18. BACKFLOW ASSEMBLY TO BE PAINTED DESERT TAN PER EMWD SPECIFICATIONS.
19. EASEMENT WILL BE REQUIRED IF SERVICE IS INSTALLED OUTSIDE OF RIGHT OF WAY (R.O.W.).
20. U-SHAPED RP ASSEMBLY MAY BE USED UPON EMWD APPROVAL.
21. PROVIDE VALVE EXTENSION IF DEPTH TO VALVE NUT EXCEEDS 5 FEET.
22. PROPOSED HYDRANT OR BLOW-OFF LOCATIONS:
  - A. SHALL BE PLACED
    1. 1'-6" BEHIND CURB FACE WHEN THE WIDTH OF SIDEWALK IS 8' OR WIDER.
    2. 7'-6" BEHIND CURB FACE WHEN THE WIDTH OF SIDEWALK IS 6' WIDE.
    3. 7'-6" BEHIND CURB FACE WHEN THERE IS NO SIDEWALK.
    4. 1'-6" WITHIN ROAD RIGHT-OF-WAY WHEN NO CURBS OR SIDEWALKS ARE PROPOSED.
  - B. FIRE HYDRANT OR BLOW-OFF TO BE 1' BACK FROM INTERSECTION OF SIDEWALK WITH CORNER APRON.
  - C. AT OTHER THAN STREET INTERSECTIONS FIRE HYDRANT OR BLOW-OFF TO BE ON LOT LINES.
  - D. IF A MEANDERING SIDEWALK EXISTS, FINAL PLACEMENT SHALL BE PER EMWD.
23. INSTALL (4) FOUR GUARD POSTS PER B-665. INSTALLATION LOCATION SHALL BE COORDINATED WITH THE EMWD INSPECTOR.
24. FREEZE PROTECTION IS REQUIRED. RP DEVICE RELIEF VALVE MUST BE ABLE TO VENT FREELY AND TESTCOCK OPENINGS SHALL BE LEFT EXPOSED.
25. THEFT PREVENTION DEVICES WILL ALLOW FOR ADEQUATE ACCESS TO THE ASSEMBLY FOR TESTING, MAINTENANCE, AND PROPER DRAINAGE. THEFT PREVENTION DEVICE REQUIREMENTS WILL BE AT THE DIRECTION OF EMWD.

MATERIAL LIST		
①	1 EA	4" THRU 10" REDUCED PRESSURE PRINCIPLE BACKFLOW PREVENTION ASSEMBLY WITH VALVES
②	2 EA	F X H ADAPTER AS REQUIRED TO CONNECT LATERAL MATERIAL TO DIP OR CML&C ELBOW
③	2 EA	ADJUSTABLE PIPE SUPPORT
④	2 EA	F X F DUCTILE IRON ELBOW WITH CLASS 150 FLANGES
⑤	1 EA	F X F DUCTILE IRON SPOOL (LENGTH AS REQUIRED)
⑥	2 EA	CONCRETE PAD 12" X 12" X 4"
⑦	2 EA	CONCRETE THRUST BLOCK PER B-407
⑧	2 EA	V-BIO ENHANCED POLYETHYLENE ENCASEMENT PER ANSI/AWWA C105/A21.5 (SEE NOTE 15)
⑨	1 EA	DUCTILE IRON BURY WITH CL 150 FLANGE X MECHANICAL JOINT (FUTURE FIRE HYDRANT)
⑩	1 EA	DUCTILE IRON BASE BEND WITH CL 150 FLANGE X MECHANICAL JOINT
⑪	1 EA	F X F DUCTILE IRON TEE WITH HYDRANT FLANGE ADAPTER
⑫	2 EA	3' x 3' x 1' CLASS "C" CONCRETE SUPPORT BLOCK



REVISIONS				APPROVALS		
NO.	DATE	INITIAL	DESCRIPTION	APP'D	DATE	
						DESIGN
						CONSTRUCTION
						INSPECTION
						OPERATIONS
						SUBMITTED

	DESIGN	SL	4/15/24
	CONSTRUCTION	DB	4/11/24
	INSPECTION	BAM	4/11/24
	OPERATIONS	JD	4/11/24
	SUBMITTED	SL	4/15/24

**EASTERN MUNICIPAL WATER DISTRICT  
STANDARD DRAWING**

**REDUCED PRESSURE BACKFLOW  
DEVICE FACILITY INTERTIE**

REFERENCES:	SCALE: NONE
FILE I.D.: J:\Master CAD Files - Restricted\B-986	DRAWN BY: GS

**RECOMMENDED** *Shaun Stone* 4/11/24  
DIRECTOR OF ENGINEERING DATE

**APPROVED** *Lanaya Alexander* 4/11/24  
ASSISTANT GENERAL MANAGER DATE

**B-986**