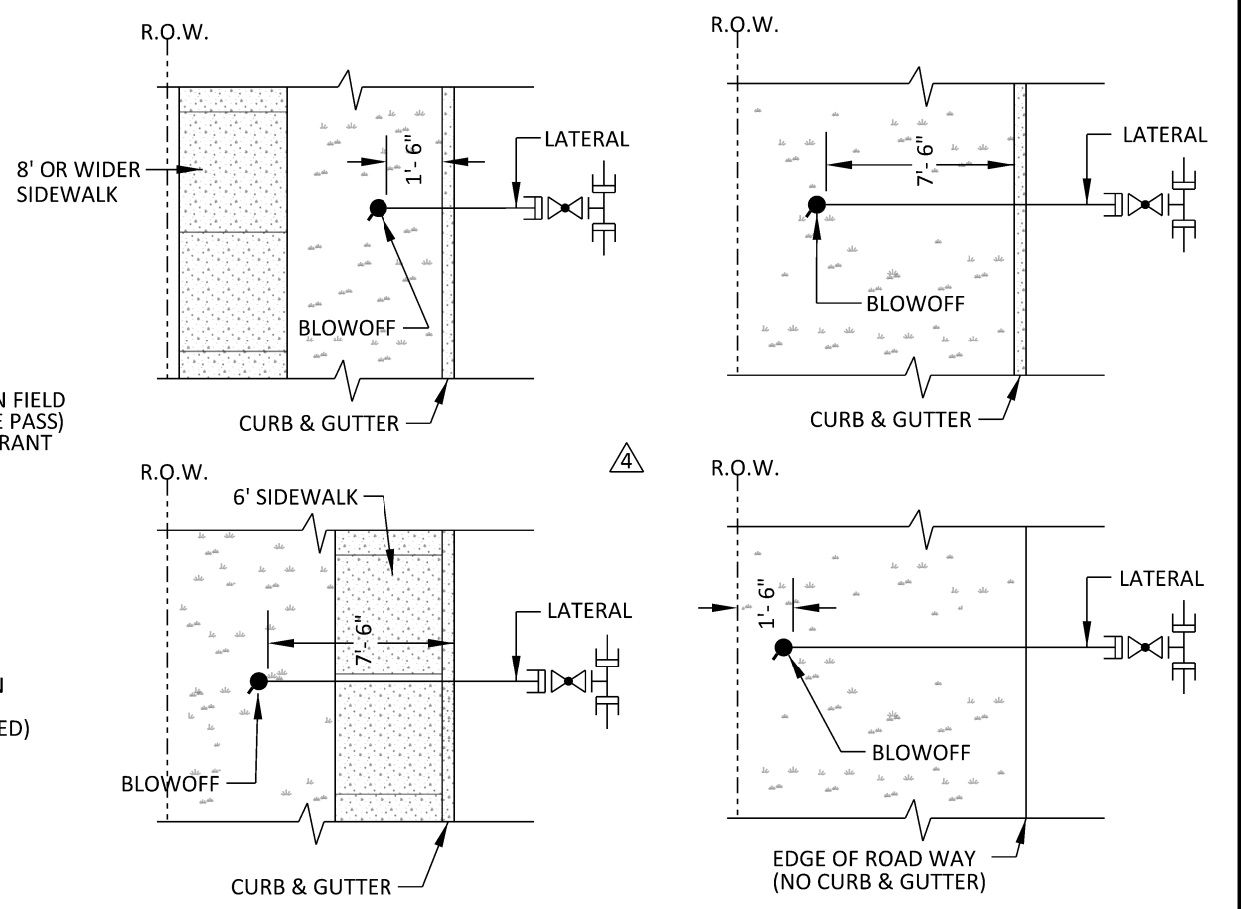


PIPELINE INSTALLATION


BLOW OFF ASSEMBLY

- NOTES:**
1. BLOWOFF TO BE PAINTED APPROVED YELLOW.
 2. ALL FLANGES SHALL BE FULL WELDED (DOUBLE PASS) AND COATED IN THE FIELD AS DIRECTED BY THE ENGINEER PER NOTE 5.
 3. ALTERNATE MATERIALS MAY BE USED WHEN SPECIFIED.
 4. BLOW OFF LOCATIONS:
 - A. BLOW OFF SHALL BE PLACED
 1. 1'-6" BEHIND CURB FACE WHEN THE WIDTH OF SIDEWALK IS 8' OR WIDER.
 2. 7'-6" BEHIND CURB FACE WHEN THE WIDTH OF SIDEWALK IS 6' WIDE.
 3. 7'-6" BEHIND CURB FACE WHEN THERE IS NO SIDEWALK.
 4. 1'-6" WITHIN ROAD RIGHT-OF-WAY WHEN NO CURBS OR SIDEWALKS ARE PROPOSED.
 - B. BLOW OFF TO BE 1' BACK FROM INTERSECTION OF SIDEWALK WITH CORNER APRON. AT OTHER THAN
 - C. STREET INTERSECTIONS BLOW OFF TO BE ON LOT LINES.
 5. FIELD COATING FOR EXPOSED PIPE SHALL BE PER EMWD SPECIFICATIONS AND APPROVED MATERIALS.
 6. A MINIMUM 3 FT CLEAR SPACE SHALL BE MAINTAINED AROUND THE CIRCUMFERENCE OF THE BLOW OFF.



BLOW OFF INSTALLATION DETAIL

(SEE NOTE 4)
NOT TO SCALE

REVISIONS						APPROVALS			EASTERN MUNICIPAL WATER DISTRICT STANDARD DRAWING		
NO.	DATE	INITIAL	DESCRIPTION	APP'D	DATE		INITIAL	DATE			
4	4/23/21	GS	UPDATED TITLE BLOCK, LOGO, FONT, RISER REFERENCE, NOTE 1, RISER FLANGE AND ADDED INSTALLATION DETAIL	AG	4/23/21	DESIGN					
3	10/14/05	CM	CHANGE F.H. TITLE & NOTES TO BLOWOFF	VJB	10/14/05	CONSTRUCTION					
2	5/18/00	GR	REVISED ALL FONT & ADDED NOTE 6	VJB	5/19/00	INSPECTION					
1	4/6/93		REDRAWN W/CADD ON MYLAR	VJB	5/19/93	OPERATIONS	PR	5/18/93			
						SUBMITTED	VJB	5/19/93			
REFERENCES: SUPERCEDES B-349				SCALE: NONE		RECOMMENDED		Joseph D. Van Sickle 6/3/93		APPROVED G. Hooite Ruggie 7/2/93	
FILE I.D.: \kauai\eng\std dwgs\B-351.dgn				DRAWN BY: GS		DIRECTOR OF ENGINEERING		DATE		CHIEF ENGINEER DATE	

B-351

