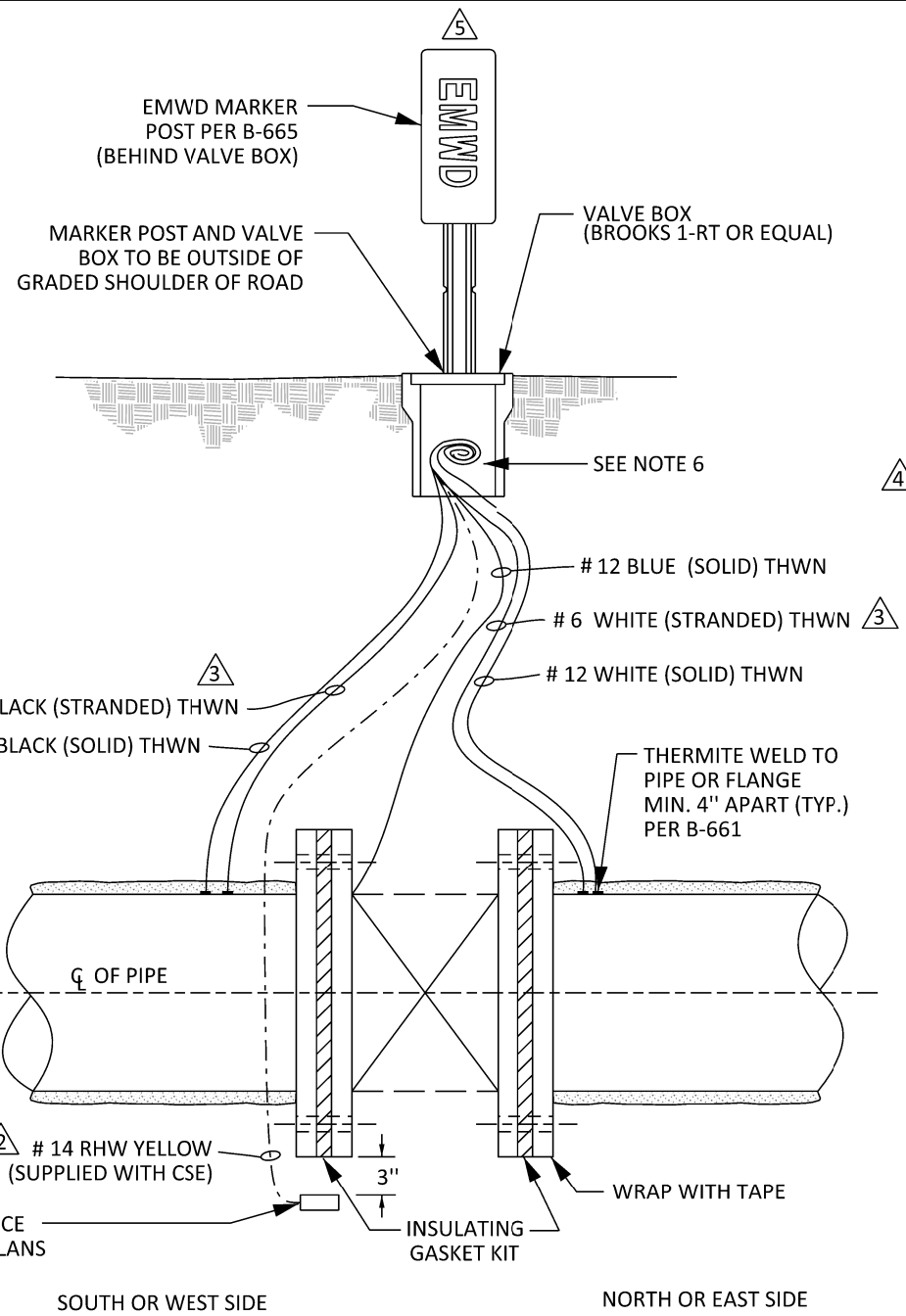


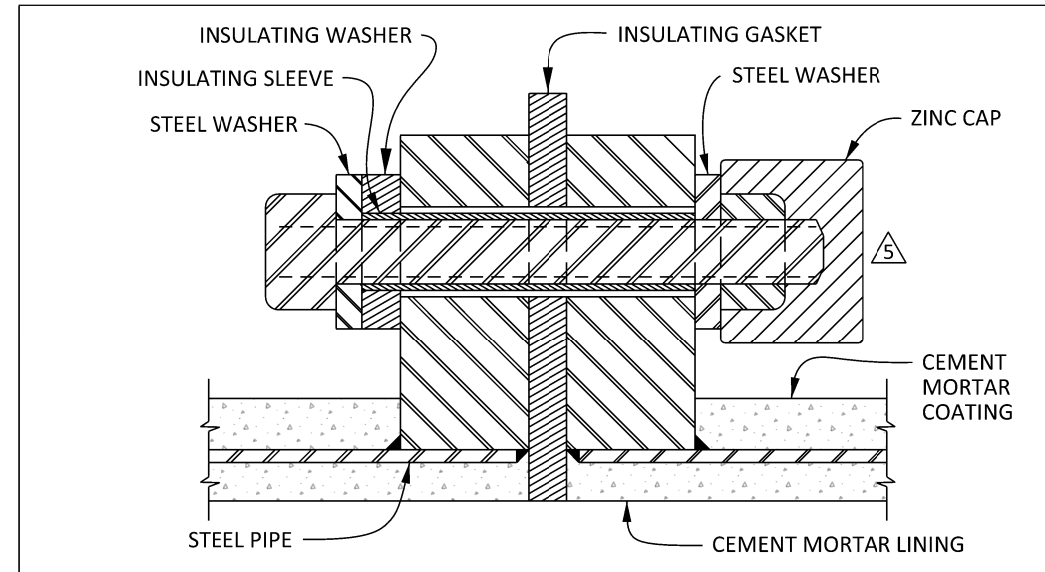
INSULATED JOINT TEST STATION



INSULATED JOINT AT VALVE TEST STATION

NOTES:

1. LEAD WIRES SHALL BE 3 FT DEEP THROUGH ROAD SHOULDER.
2. THE VALVE BOX SHALL BE LOCATED JUST OUTSIDE THE PROPERTY LINE (IN STREET R/W) EXCEPT AS OTHERWISE DIRECTED BY THE ENGINEER.
3. WHITE WIRES TO BE PLACED ON THE NORTH AND EAST SIDE OF INSULATED FLANGE OR VALVE.
4. PIPELINE SHALL BE ASSEMBLED IN TRENCH PRIOR TO THERMITE WELDING.
5. WIRE AND BONDED CONNECTIONS SHALL BE PROTECTED DURING FIELD MORTARING OF PIPE JOINTS.
6. TERMINATE ALL WIRES A MINIMUM OF ONE FOOT ABOVE GROUND LEVEL AND COIL EXCESS WIRE IN BOX.
7. SEE EMWD STANDARD SPECIFICATION SECTION 9810 "TAPE WRAP FOR INSULATED JOINTS" FOR MATERIALS AND INSTALLATION.
8. HMWPE WIRE INSULATION TO BE UL LISTED FOR U.S.E.
9. FOR WIRES ABOVE GROUND, TAG INDIVIDUAL WIRES FOR IDENTIFICATION PURPOSES, FOR BURIED WIRES, PLACE MARKER TAPE.



1. IF ANODES ARE INSTALLED, PLACE NON-INSULATED SIDE OF BOLT TOWARD ANODE.
2. DO NOT APPLY METALLIC OR OTHER NON-INSULATING PAINTS TO INSULATING PARTS OR OUTER EDGES OF FLANGES.
3. INSULATING SLEEVE TO BE 0.015" SHORTER THAN DISTANCE BETWEEN STEEL WASHERS WHEN BOLT IS FULLY TIGHTENED.
4. FOR PIPE 24" & LARGER, INSULATING WASHER TO BE "PYROX" OR OF EQUAL STRENGTH.
5. FLANGE INSULATION KIT MUST BE EMWD APPROVED AND MUST INCLUDE AN O-RING SEALING ELEMENT MANUFACTURED AS PART OF THE INSULATING GASKET.
6. FOR DISTRICT CONTRACT WORK: INSULATED FLANGED JOINT TO BE FACTORY ASSEMBLED WITHIN A PIPE SECTION AND TESTED, UNLESS OTHERWISE SPECIFIED.
7. RING FLANGE BOLT ZINC CAPS TO BE INSTALLED PER MANUFACTURERS RECOMMENDATION.

INSULATED FLANGED JOINT DETAIL

REVISIONS				APPROVALS		
NO.	DATE	INITIAL	DESCRIPTION	APP'D	DATE	DATE
5	5/3/19	GS	UPDATED TITLE BLOCK, FONT, MARKER POST, NOTE 7, ZINC CAP AND LOGO	AGA	5/3/19	1/23/97
4	8/31/07	RE	ADDED NOTE #9	JM	12/18/07	4/23/97
3	1/12/04	CM	REV. #6 BLACK & WHITE WIRE INSUL. TO THWN	VJB	1/12/04	1/28/97
2	5/4/99	GR	REVISED #14 RHW COLOR	VJB	5/6/99	

REFERENCES: B-661 SUPERCEDES B-363 & 379	SCALE: NONE
FILE I.D.: \kauai\eng\std dwgs\B-660.dgn	DRAWN BY: KER

DESIGN	GLJ	1/23/97
CONSTRUCTION		
INSPECTION	JEW	4/23/97
OPERATIONS	LMc	1/28/97
SUBMITTED		

RECOMMENDED	Michael G. Meyerpeter	1/24/97
	DIRECTOR OF ENGINEERING	DATE



**EASTERN MUNICIPAL WATER DISTRICT
STANDARD DRAWING**

**TEST STATION INSULATED JOINT
AND INSULATED JOINT AT VALVE**

APPROVED <i>Charles J. Bachmann</i>	4/25/97	B-660
ASSISTANT GENERAL MANAGER	DATE	