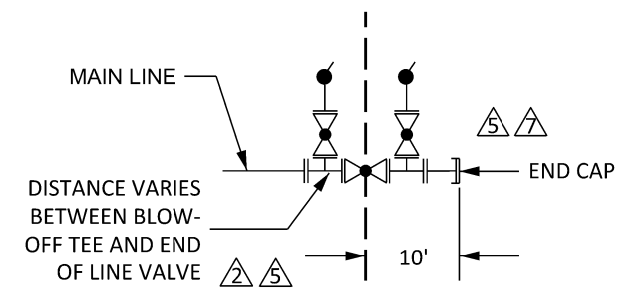
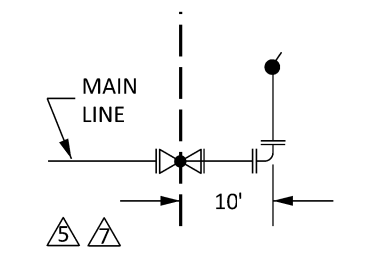


- NOTES:**
- ALL CML&C PIPE SHALL MEET EMWD SPEC. SECTION 15061.
 - ALL D.I. PIPE SHALL MEET EMWD SPEC. SECTION 15057.
 - PROVIDE VALVE EXTENSION IF DEPTH TO VALVE NUT EXCEEDS 5 FEET.
 - VALVE BOX AND METER BOX LIDS TO BE PAINTED PURPLE PANTONE 522C PER EMWD STANDARD DRAWING PA-2.
 - BALL VALVE AND CAM LOCK TO BE PAINTED PURPLE PANTONE 522C.
 - RESTRAIN D.I. PIPE PER PIPE MANUFACTURER.
 - BLOW OFF LOCATIONS:
 - FACE OF BOX SHALL BE PLACED
 - 1'-6" BEHIND CURB FACE WHEN THE WIDTH OF SIDEWALK IS 8' OR WIDER.
 - 7'-6" BEHIND CURB FACE WHEN THE WIDTH OF SIDEWALK IS 6' WIDE.
 - 7'-6" BEHIND CURB FACE WHEN THERE IS NO SIDEWALK.
 - 1'-6" WITHIN ROAD RIGHT-OF-WAY WHEN NO CURBS OR SIDEWALKS ARE PROPOSED.
 - BLOW OFF TO BE 1' BACK FROM INTERSECTION OF SIDEWALK WITH CORNER APRON.
 - AT OTHER THAN STREET INTERSECTIONS BLOW-OFF TO BE ON LOT LINES.
 - FIELD COATING FOR EXPOSED STEEL PIPE SHALL BE PER EMWD SPECIFICATIONS AND APPROVED MATERIALS.
 - FOR MAINLINE;
 - 36" & LARGER USE 4" S.S. BALL VALVE WITH TEFLON SEAT AND 4" CAMLOCK (FEMALE COUPLER X MALE NPT)
 - SMALLER THAN 36" USE 4"X 2" BRASS BUSHING WITH MIN. 2" S.S. BALL VALVE WITH TEFLON SEAT AND 2" CAMLOCK (FEMALE COUPLER X MALE NPT).

ALTERNATIVE "A"

PROJECT LIMIT
TRACT BNDRY OR END OF STREET
IMPROVEMENT OR PROPERTY LINE

PROJECT LIMIT
TRACT BNDRY OR END OF STREET
IMPROVEMENT OR PROPERTY LINE

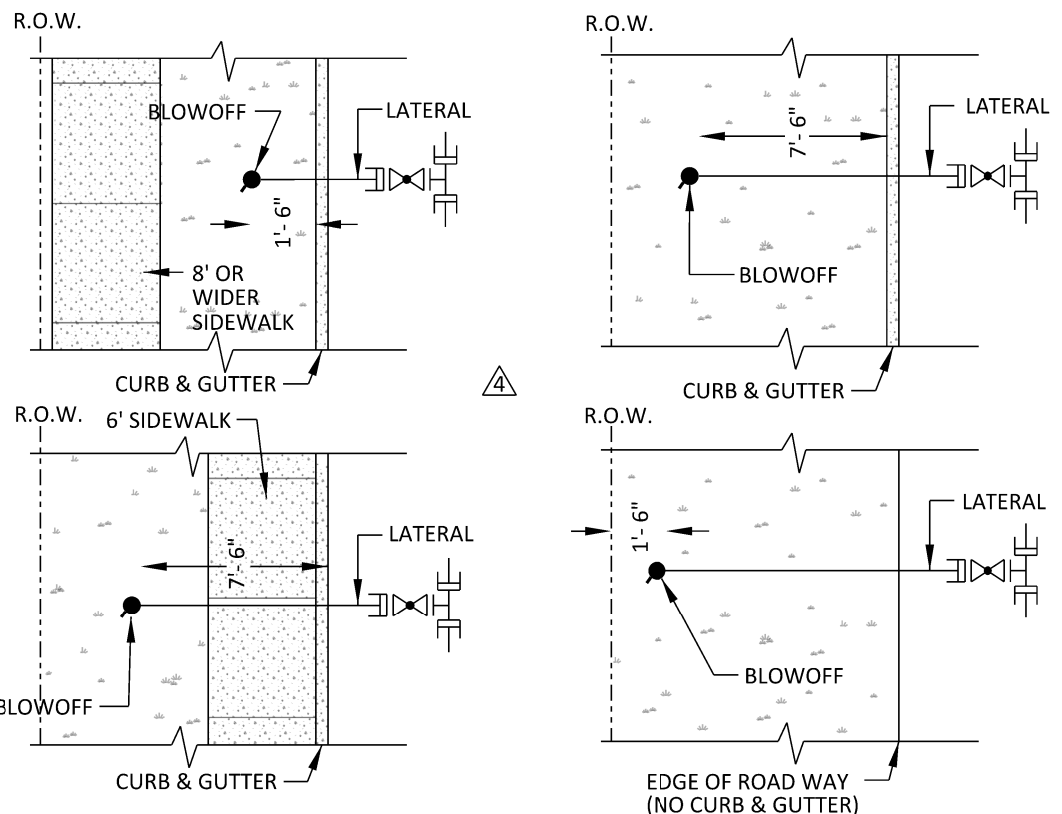


PERMANENT END OF LINE INSTALLATION
(NO FUTURE EXTENSION)

TEMPORARY END OF LINE INSTALLATION
(FUTURE EXTENSION)

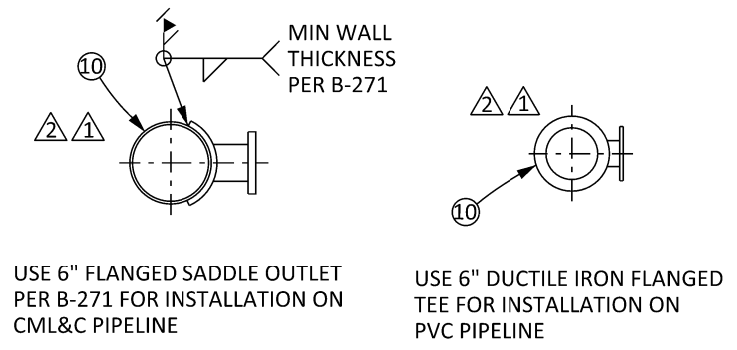
MATERIAL LIST

ITEM	QTY	DESCRIPTION
①	1	BROOKS NO. 4-TT VALVE CAP OR APPROVED EQUAL PER B-668
②	1	VALVE CAN PER B-668
③	1	FXF RSGV
④	1	DI OR CML&C 90° ELBOW
⑤	1	FLANGED OR MJ D.I. PIPE OR CML&C PIPE
⑥	1	SIZE"X 4" COMPANION FLANGE
⑦	1	BALL VALVE WITH CLOSE NIPPLE (SEE NOTE 9)
⑧	1	CAMLOCK (SEE NOTE 9)
⑨	1	METER BOX (MINIMUM SIZE) J&R CONCRETE NO. 4-1/2(NO.37) OR APPROVED EQUAL, SIZED TO ACCOMODATE FITTINGS
⑩	1	LINE SIZE BY PRE CONNECTION
⑪	1	FXF SPOOL 36" LENGTH



BLOW OFF INSTALLATION DETAIL

(SEE NOTE 7)
NOT TO SCALE



NOTE: RECYCLED WATER BLOW-OFF SHALL MAINTAIN A MINIMUM OF FIVE (5') FEET SEPARATION FROM ANY POTABLE WATER APPURTENANCE.

REVISIONS				APPROVALS			
NO.	DATE	INITIAL	DESCRIPTION	APP'D	DATE	INITIAL	DATE
①	9/25/20	GS	REVISED NOTE 9 AND TEMPORARY END OF LINE DETAIL	AGA	9/25/20		
②	5/29/19	GS	UPDATE LAYOUT, TITLE BLOCK, FONT, LOGO, END OF LINE DETAIL, AND MIN MAX SPOOL SIZE FOR METER CONVERSION	AGA	5/29/19		
③	12/11/13	GS	ADDED PERMANENT END OF LINE BLOW OFF DETAIL, NOTES, MATERIALS, & PVC PIPELINE	AGA	12/17/13		

REFERENCES: SUPERCEDES PA-1	SCALE: NONE
FILE I.D.: \kauai\eng\std dwgs\PB-18.dgn	DRAWN BY: GS

DESIGN	CONSTRUCTION	OPERATIONS	SUBMITTED
	CD	KG	VJB
	7/14/05	7/15/05	7/18/05



**EASTERN MUNICIPAL WATER DISTRICT
STANDARD DRAWING**

4"- 8" RECYCLED WATER BLOW OFF

APPROVED Charlie J. Bachmann 7/18/05
ASSISTANT GENERAL MANAGER DATE

PB-18